

LANDSCAPING PACKAGE

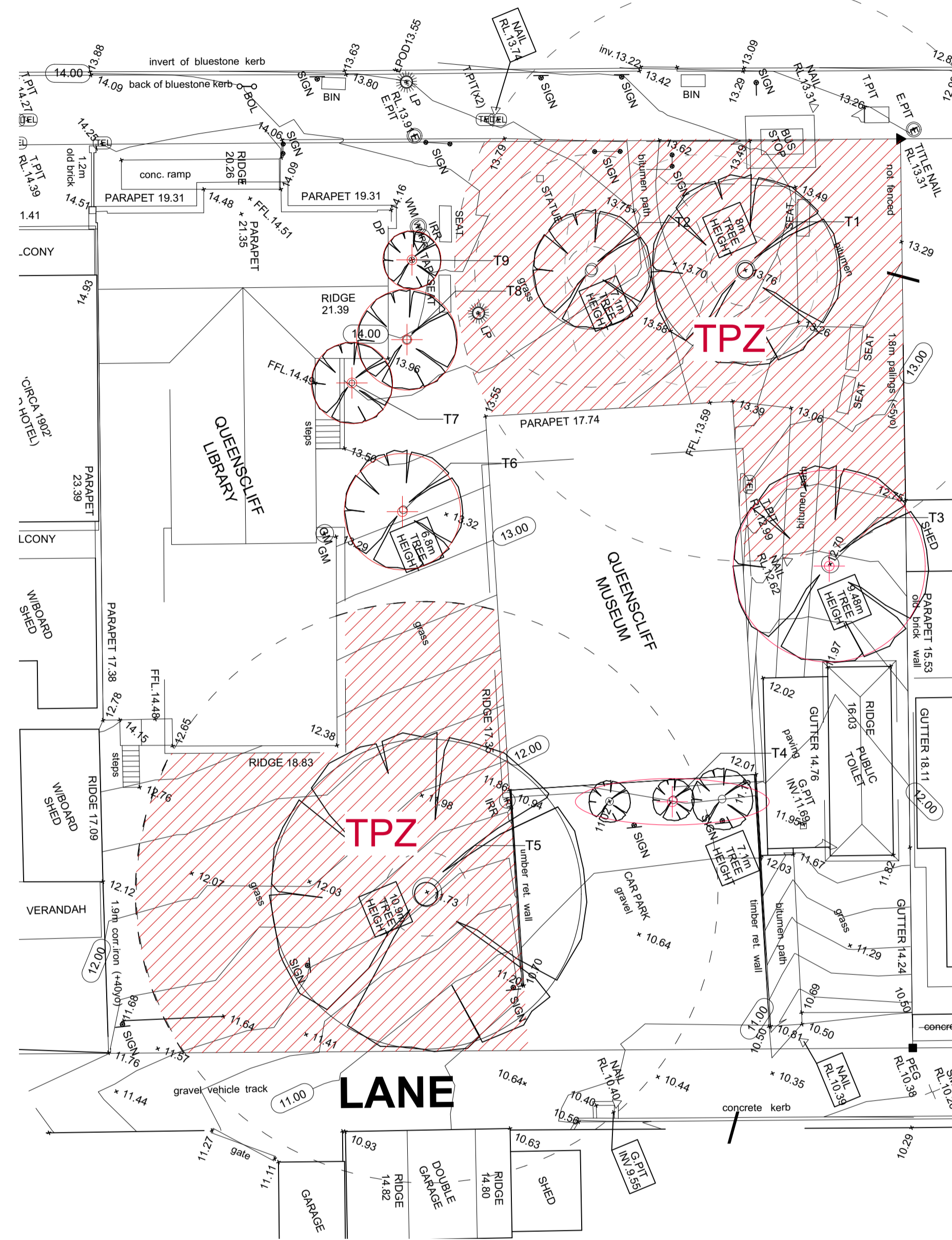
QUEENSCLIFFE
HUB

JUNE 2021

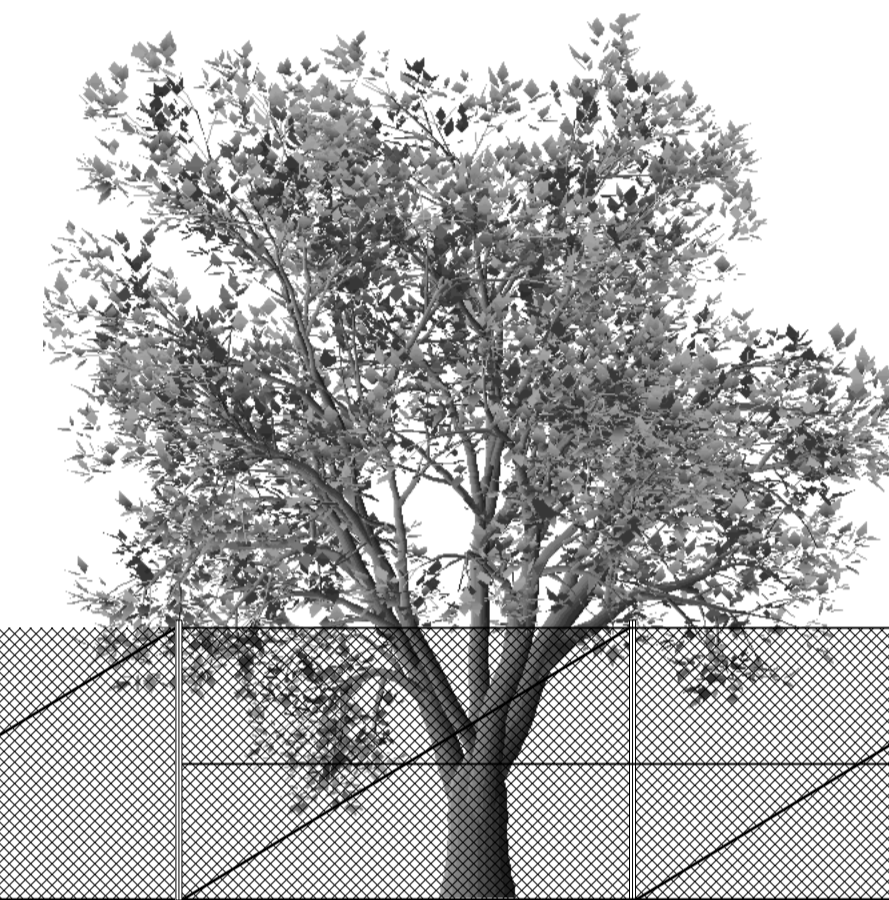


LANDSCAPE DESIGN

HESSE STREET



1 Existing Trees
Scale: 1:200



Tree Protection Fence installed around a tree at the perimeter of the Tree Protection Zone (TPZ). Anchor posts are located to avoid damage to tree roots greater than 25mm in diameter. A lockable gate can be installed in the fence if required for maintenance purposes.

TREE PROTECTION ZONE

REFER TREE MANAGEMENT AND PROTECTION PLAN

2 TREE PROTECTION FENCING
Scale: 1:50

Existing Tree Report

ID	Botanical Name	Common Name	Origin	Average Spread	Height	Action	Notes
T1	<i>Azonia flexuosa</i>	Willow Myrtle	Native	9500	8000	Retain	BRANCHES PRUNED TO OPEN UNDER-CANOPY. CONTINUED ARBORIST MONITORING
T2	<i>Coccoloba ficifolia</i>	Red Flowering Gum	Native	6000	7100	Retain	BRANCHES PRUNED TO OPEN UNDER-CANOPY. CONTINUED ARBORIST MONITORING
T3	<i>Azonia flexuosa</i>	Willow Myrtle	Native	9900	9400	Remove	DUE TO BUILDING WORKS
T4	<i>Pittosporum eugenoides</i>	Tarata	Exotic	6200	9400	Remove	DUE TO BUILDING WORKS
T5	<i>Ficus macrophylla</i>	Moreton Bay Fig	Native	16000	10900	Retain	CONTINUED ARBORIST MONITORING
T6	<i>Melia azadarach</i>	White Cedar	Native	6000	6800	Remove	DUE TO BUILDING WORKS
T7	<i>Bursaria spinosa</i>	Sweet Bursaria	Native	4200	6800	Remove	DUE TO BUILDING WORKS
T8	<i>Bursaria spinosa</i>	Sweet Bursaria	Native	5200	6800	Remove	DUE TO BUILDING WORKS
T9	<i>Bursaria spinosa</i>	Sweet Bursaria	Native	3000	6800	Remove	DUE TO BUILDING WORKS

Revision	Date	Issue Note
PRELIM	07.08.20	PRELIMINARY
T1	07.10.20	PRELIMINARY
C1	29.04.21	PRELIMINARY

SIMON ELLIS
LANDSCAPE ARCHITECTS
110 Highett Street
Richmond 3121
Victoria, Australia
t +61 3 8855 8699
m +61 0423818482
e office@simonellis.com.au
www.simonellis.com.au

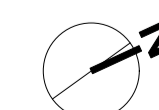
drawing title
EXISTING TREES PLAN

project
QUEENSCLIFF COMMUNITY HUB
at
HESSE ST QUEENSCLIFF
for
KTA

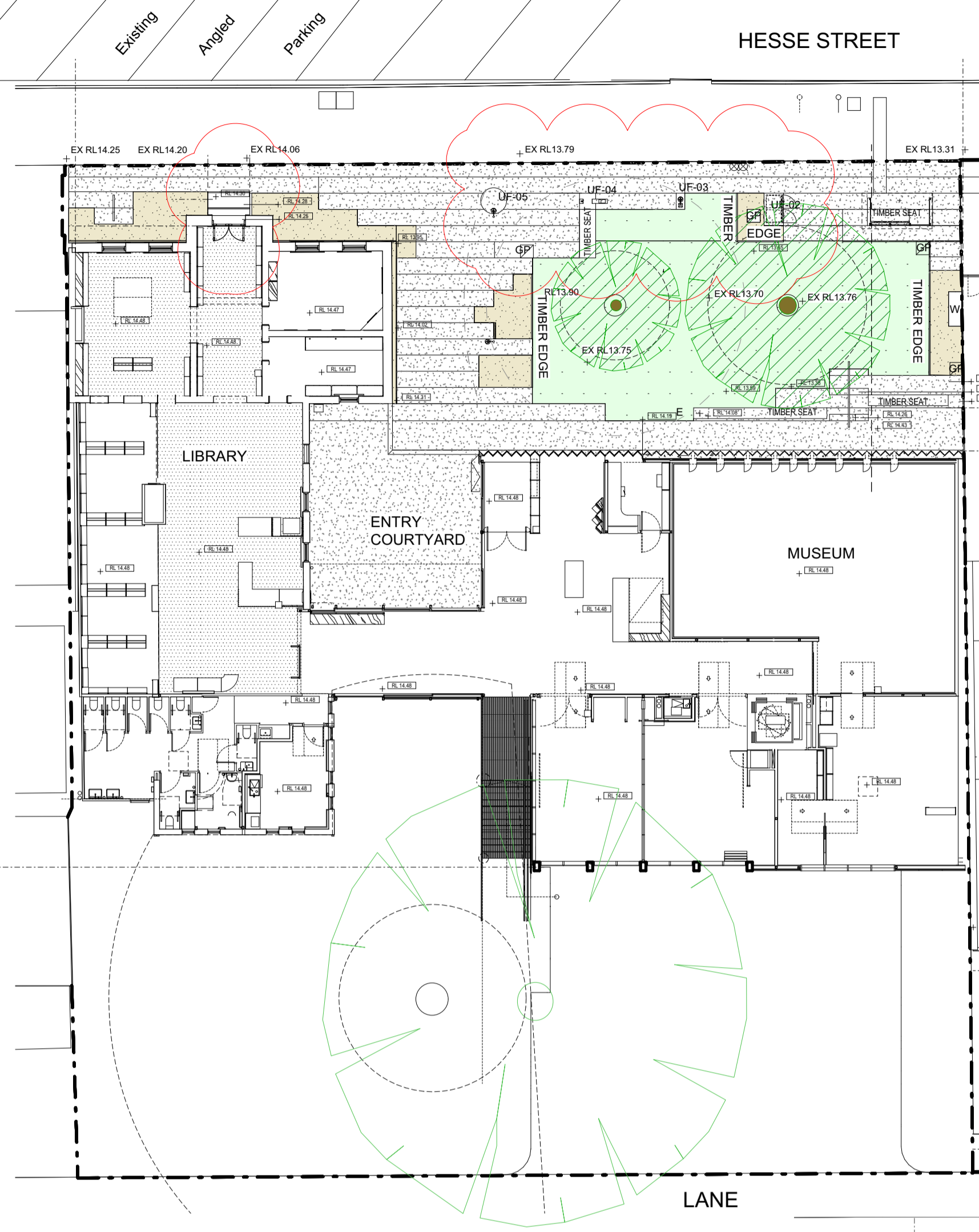
date	drawn by	drawing no.	rev
19.06.20	SE	CD01	C1
scale	project		
1:200@A1	279		

copyright 2021

0 5 10 M

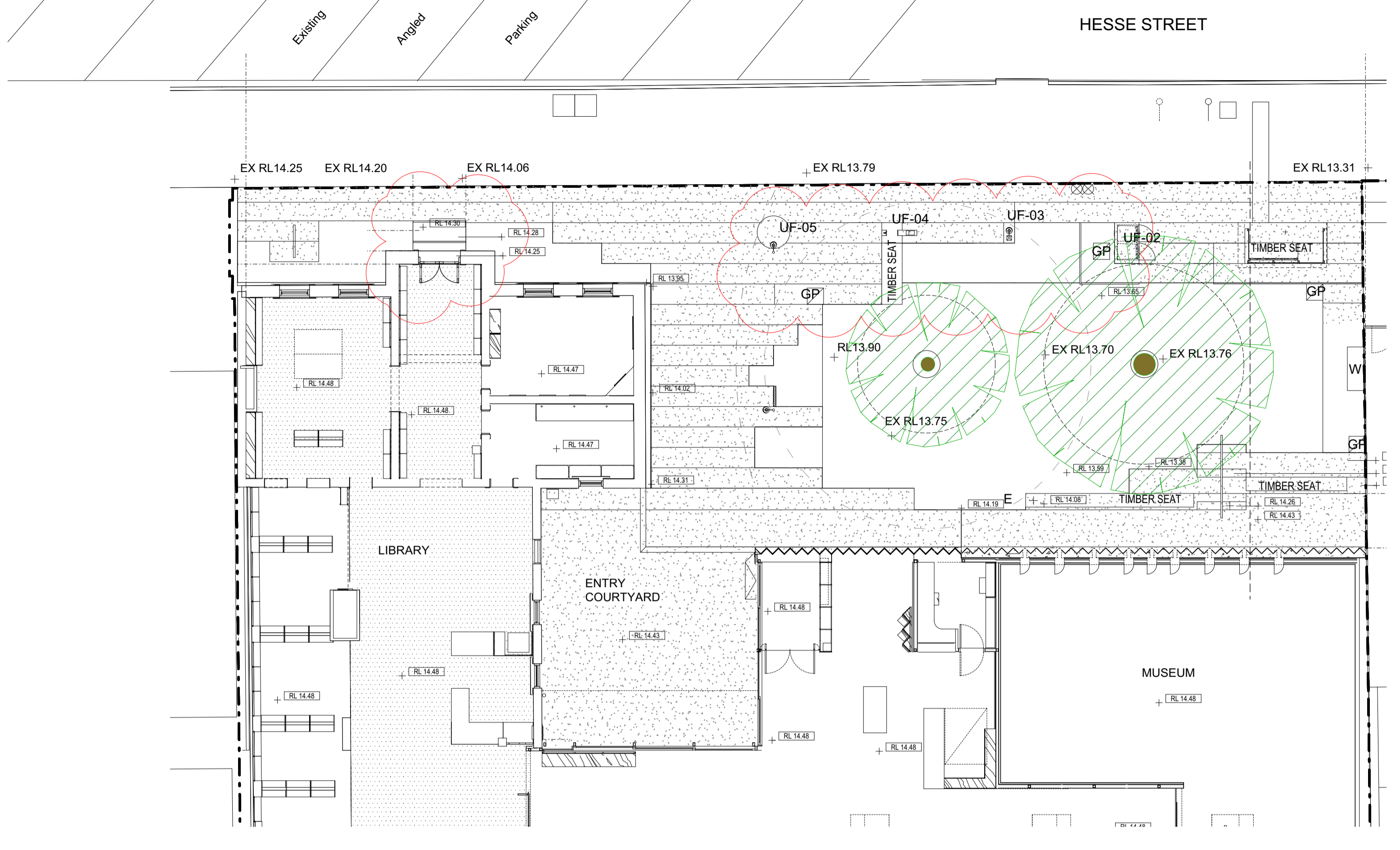


FOR CONSTRUCTION

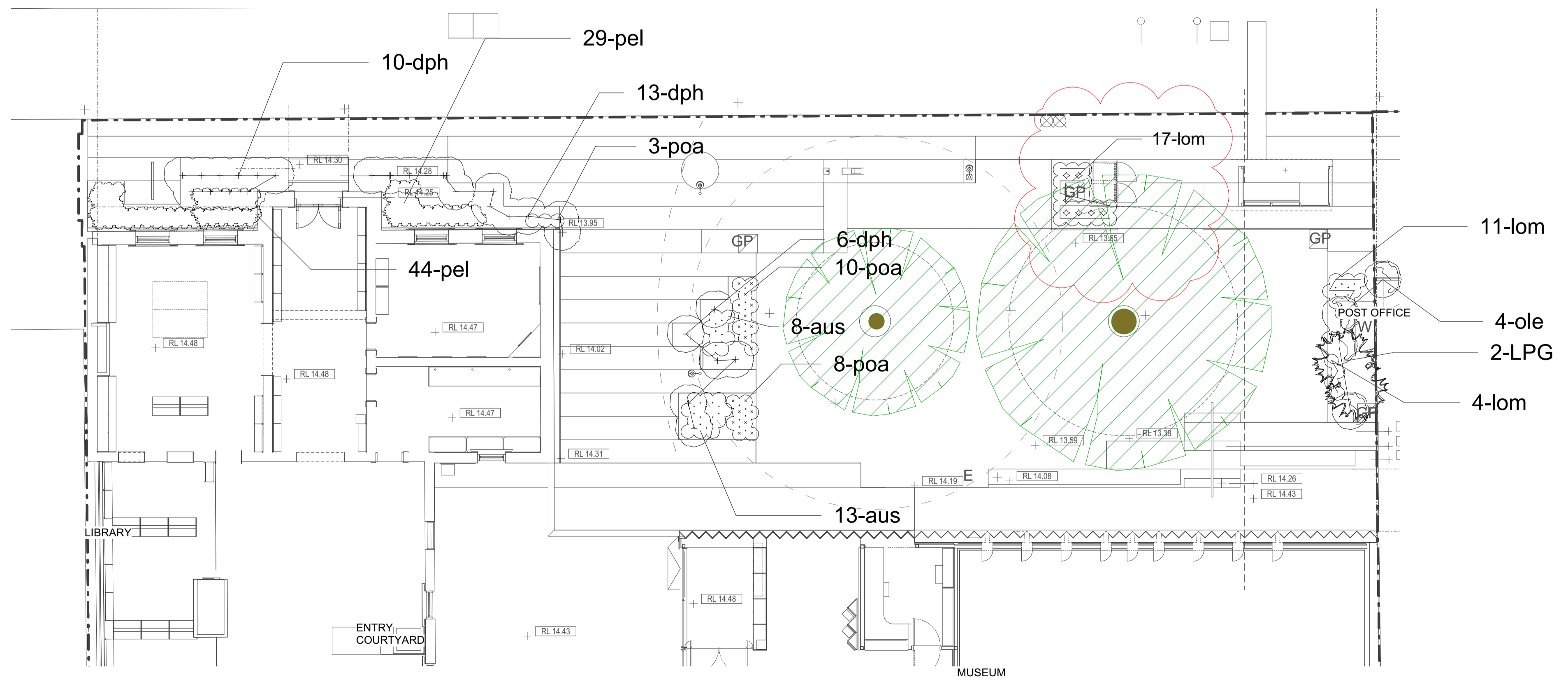


1 UPPER LEVEL SURFACES PLAN
CD02 Scale: 1:200

- KEY
- EXISTING TREE
 - SHELL GRIT GARDEN
 - CONCRETE PAVING SURFACE
 - LAWN SURFACE - ROLLED TURF TALL FESCUE
 - TIMBER SEAT TOP



2 UPPER LEVEL GRADING PLAN
CD02 Scale: 1:125



4 UPPER LEVEL PLANTING PLAN
CD02 Scale: 1:100

POST OFFICE

11-lom
4-ole
2-LPG
4-lom

Revision	Date	Issue Note
PRELIM	07.08.20	PRELIMINARY
T1	07.10.20	PRELIMINARY
C1	29.04.21	PRELIMINARY

SIMON ELLIS
LANDSCAPE ARCHITECTS
110 Highett Street
Richmond 3121
Victoria, Australia
t +61 3 8855 8699
m +61 0425819482
e office@simonellis.com.au
w simonellis.com.au

drawing title
UPPER SURFACES AND PLANTING PLAN

project	date	drawn by	drawing no.	rev
QUEENSCLEIFFE COMMUNITY HUB	19.06.20	SE	CD02	C1
at HESSE ST QUEENSCLEIFFE	scale	project		
for KTA	1:200@A1	279		

copyright 2021
FOR CONSTRUCTION

PLANTING AND SOIL NOTES

PLANTING SPECIFICATION

1.1 Mulch

General
Provide mulch which is free of deleterious and extraneous matter such as soil, weeds and sticks. Do not include fine mulch.

- Particle size, physical and chemical contaminants: To AS 4454 Table 3.1(A).
- pH, electrical conductivity, ammonium, chlorine and other nutrients: To AS 3743 Table 2.1 for regular mix.

Organic mulches: Free of stones.

Mulch material:

- a) 12mm Recycled hardwood chipp
- b) 20-40mm Slate/pebble mulch as supplied by Burdett's 9789 8266 (not compacted) in areas as shown

2 Execution

2.1 Preparation

Weed eradication

Herbicide: Eradicate weeds using environmentally acceptable methods, such as a non-residual glyphosate herbicide in any of its registered formulas, at the recommended maximum rate.
Removal: Regularly remove, by hand, rubbish and weed growth throughout grassed, planted and mulched areas. Remove weed growth from an area 750 mm diameter around the base of the trees in grassed areas. Continue eradication throughout the course of the works and during the planting establishment period.

Vegetative spoil
Disposal: Remove vegetative spoil from site. Do not burn.

2.2 Planting

Setting out
Set out all plant material in accordance with the plan and obtain on-site approval of the superintendent prior to planting.

Locations
General: If it appears necessary to vary plant locations and spacing's to avoid service lines, or to cover the area uniformly, or for other reasons, give notice.
Planting conditions
Weather: Do not plant in unsuitable weather conditions such as extreme heat, cold, wind or rain. In other than sandy soils, suspend excavation when the soil is wet, or during frost periods.

Watering
Timing: Thoroughly water the plants before planting, immediately after planting, and as required to maintain growth rates free of stress.

Placing

Method: Remove the plant from the container with minimum disturbance to the root ball. Root prune to ensure all circling roots have been either severed or aligned radially into the surrounding soil. Make sure that the root ball is moist, place it in its final position, in the centre of the hole and plumb, and with the top soil level of the plant, level with the finished surface of the surrounding soil. Compact lightly so as to minimise subsidence without compacting the backfill. Avoid mixing mulch with topsoil.

Planting Procedure

- Thoroughly soak the plant the day before planting
- Do not disturb, compact or damage sub-surface soil improvements. Before doing any excavation or driving stakes, ascertain the location of all underground services. In the event that any are discovered, give notice immediately to enable the relocation of plants.
- Notify the superintendent of all soil or drainage conditions which the contractor considers detrimental to the plant conditions
- Observe recognised best horticultural practices during the planting procedure
- Excavate holes in accordance with the details. The contractor shall remove excess excavated soil from the site.
- If the excavated soil is very dry, fill the hole with water and allow to drain completely.
- Remove the plant from the container with minimum disturbance to the root ball. Root prune to ensure all circling roots have been either severed or aligned radially into the surrounding soil.
- Ensure that the root ball is moist and place it in its final position, in the centre of the hole and plumb, and with the top soil level of the plant root ball level with the finished surface of the surrounding soil.
- Compact lightly so as to minimise subsidence without compacting the backfill. Avoid mixing mulch with topsoil.

PLANTING SPECIFICATION CONT.

Fertilising

Fertilise each plant as per soil specification

Backfilling
General: Backfill with topsoil mixture or composted natural ground (refer soil spec). Lightly tamp and water to eliminate air pockets. Make sure that topsoil is not placed over the top of the root ball, so the plant stem remains the same height above ground as it was in the container.

2.3 Mulching

Placing mulch

General: Place mulch to the required depth, clear of plant stems, and rake to an even surface flush with the surrounding finished levels. Spread and roll mulch so that after settling, or after rolling, it is smooth and evenly graded between design surface levels sloped towards the base of plant stems in plantation beds, and not closer to the stem than 50 mm in the case of gravel mulches.

In mass planted areas: Place after the preparation of the planting bed but before planting and other work.
In smaller areas (e.g. planter boxes): Place after the preparation of the planting bed, planting and other work.

Extent: as shown

Depths: Spread gravel mulch to a depth of 50 mm.

2.4 Spraying

Notice

General: Immediately give notice of evidence of insect attack or disease amongst plant material.

Spraying

Product: Spray with insecticide, fungicide or both, as required.

2.5 Stakes and ties

Stakes

Material: Hardwood, straight, free from knots or twists, pointed at one end.

Installation: Drive stakes into the ground at least one third of their length, avoiding damage to the root system.

Stake sizes:

- For plants ≥ 2.5 m high: Three 50 x 50 x 2400 mm stakes per plant.

- For plants 1 to 2.5 m high: Two 50 x 50 x 1900 mm stakes per plant.

- For plants < 1 m high: One 38 x 38 x 1200 mm stake per plant.

Ties

General: Provide ties fixed securely to the stakes, one tie at half the height of the main stem, others as necessary to stabilise the plant. Attach ties loosely so as not to restrict plant growth.

Tie types:

- For plants ≥ 2.5 m high: 20 strands of 2.5 mm galvanized wire neatly twisted together, passed through reinforced rubber or plastic hose, and installed around stake and stem in a figure eight pattern.

- For plants < 2.5 m high: 100 mm hessian webbing stapled to the stake.

Trunk protection
Collar guards: 200 mm length of 100 mm diameter agricultural pipe split lengthways.

2.6 Completion

Product certification

Certification: Submit the supplier's written statement certifying that plants are true to the required species and type and free from diseases, pests and weeds.

Cleaning

Stakes and ties: Remove those no longer required at the end of the planting establishment period.
Temporary fences: Remove temporary protective fences at the end of the planting establishment period.

2.7 Laying Turf

Inspection : Give notice of inspection of grassing bed prior to laying

Products

Roll out turf: Tall Fescue

Fertiliser: Proprietary fertiliser suitable e.g. Dynamic lifter

Execution:

Preparation

BED evenly grade topsoil before laying ensuring there are no deviations in the surface

Application

Moisten the topsoil to its full depth before applying turf

Roll the turf evenly ensuring no airgaps, fill joints with topsoil

Watering: Water with a fine spray until topsoil is watered to its full depth

After installation water to maintain a healthy condition

SOIL SPECIFICATION

General comment on specifications:

Imported soil specified in this document is sand, not one of the highly organic landscape or planter mixes that are common in the landscape trade.

Specifications:

1. Materials to be sourced for construction

Samples of all soil, organic matter and drainage layer screenings to be tested by an approved laboratory prior to supply. Final approval from the landscape architect is required before any of these materials are installed.

1.1 Imported topsoil – sandy soil for placement above the pond liner in the pond area
This soil shall be a sand or loamy sand with <3% organic matter by weight. The landscape contractor shall not add any compost or organic matter to the soil without first seeking approval from the landscape designer of project manager.

The soil shall have a saturated hydraulic conductivity of between 100 mm/hr and 200 mm/hr, as measured under compaction using the AS4419 method. Preference is given to a sand at the lower end of this range of drainage rates, to reduce water stress.

The soil used shall have a pH of between 5.5 and 7.5 and a maximum electrical conductivity of 0.6 dS/m (1:5 soil water extract). If required, the pH of the soil is to be corrected before delivery to the site.

If early plant growth appears to be suffering serious nutrient stress, top dress the trenches with Everris Sierrablend Flora (21:2:9) slow release fertilizer (source Garden City Plastics), (or equivalent Low P slow release fertilizer such as Osmocote Landscape Formula (21:2:6 + Mg and TE) at 40 g/sq m.

1.2 Compost

Any organic matter imported onto the site for soil amendment shall conform to the requirements for "soil conditioner – low P" in AS 4454:2012 Composts, soil conditioners and mulches, with available phosphorus (P) levels at less than 5 mg/L soluble and total P at < 0.1 % dry wt, both as measured by the methods described in the standard.

2.0 Amelioration of site soil (most likely exposed site subsoil) for planting

a. Remove soil material to a depth of 100 mm below final grade.

b. Spread composted soil conditioner (to AS4454 – low phosphorus) to a depth of 100 mm.

c. Depending on the size of the area being prepared, use either a small excavator with bucket, or a spade, to "lift and drop" the soil in the planting area to loosen it and to roughly incorporate the compost. Loosen to approximately 200 mm depth then gently firm to level the surface for planting.

Expect the soil level to drop over time.

d. Ideally this loosening is to be done when the soil is no wetter than plastic limit (soil can be just rolled between thumb and forefinger) and preferably drier. In emergency, it can be used on wetter soil. Do not work over decompacted areas.

e. The size of the garden beds sets the size of the cultivated area.

f. After planting, apply Everris Sierrablend Flora (21:2:9) slow release fertilizer (source Garden City Plastics), (or equivalent Low P slow release fertilizer such as Osmocote Landscape Formula (21:2:6 + Mg and TE) (Burnings) at 80 g/sq m.

Ideally, this fertilizer should be applied to the soil surface prior to any mulch application.

3.0 Subsequent Fertilizer Use Tree and Shrub Plantings.

The slow release fertilizer listed above should be reapplied at 80 g/m² 12 months after planting. Subsequent fertilizer use is to be determined based on landscape condition and plant appearance.

There may be alternative fertilizer materials that could be used instead of the products listed above. The use of alternatives will require reassessment of the rate and frequency of applications.

Plant List							
ID	Qty	Common Name	Botanical Name	Scheduled Size	Mature Height	Mature Spread	Remarks
Trees							
AcPy	5	Golden Wattle	Acacia pycnantha		3 - 5m	2.0 - 3.5m	
AIV	2	Droping She-oak	Allocasuarina verticillata	300mm pot	5 - 10m	6 - 10m	
Shrubs							
apar	11	Hedge Wattle	Acacia paradoxa	tubestock	1.5 - 3m	0.9 - 1.2m	
adr	5	Bitter Bush	Adriana quadripartita	tubestock	1.50 - 3m	1.2 - 2.0m	
LPG	2	Coastal Beard-health	Leucopogon parviflorus	150mm pot	0.45 - 0.60m	0.3 - 0.6m	
ole	62	Coastal Daisy	Olearia axillaris	tubestock	0.9 - 1.5m	0.9 - 1.2m	
ppj	60	Matted Pea Bush	Pultenaea pedunculata	tubestock	0.0 - 0.3m	2.0 - 3.5m	
Ground Covers							
chry	51	Clustered Everlasting, Yellow Buttons	Chrysocephalum semipapposum	tubestock	0.45 - 0.60m	0.6 - 0.9m	
dph	29	Rounded Noon Flower	Disphyma crassifolium	tubestock	0.0 - 0.30m	1.2 - 2.0m	
pel	99	Native Storksbill, Wild Geranium, Coastal Geranium	Pelargonium australe	140mm pot	0.3 - 0.45m	0.0 - 0.3m	
tet	30	Bower Spinach	Tetragonia implexicoma	tubestock	1.50 - 3m	0.0 - 0.3m	
vio	130	Native Violet	Viola hederacea	tubestock	0.0 - 0.3m	1.2 - 2.0m	
Grasses							
aus	21	Speargrass	Austrostipa flavescens	tubestock	0.45 - 0.6m	0.3 - 0.6m	
fic	49	Knobby club-rush	Ficinia nodosa	tubestock	0.75 - 0.9m	0.0 - 0.3m	
lpd	9	Coast Sword Sedge	Lepidosperma gladiatum	tubestock	0.9 - 1.5m	1.2 - 2.0m	
lom	250	Spiny-headed Mat-Rush	Lomandra longifolia	tubestock	0.75 - 0.9m	0.9 - 1.2m	
poa	21	Tussock Grass	Poa labillardieri	tubestock	0.75 - 0.9m	0.6 - 0.9m	
Climbers							
Aquatic Plants							
Perennials							
Ferns							
Total	836						

PLANT SUPPLY NOTE:

ALL PLANTS TO BE PROCURED AND ORDERED AT THE COMMENCEMENT OF THE BUILDING CONTRACT DEPOSIT TO BE PAID 12 MONTHS IN ADVANCE FROM THE FOLLOWING LOCAL INDIGENOUS NURSERY

Queenscliffe Community Nursery
Borough of Queenscliffe
TEL 5258 1377

REVISED PLANT SCHEDULE -
SAME PLANT NUMBERS

PLANT ESTABLISHMENT NOTES

PLANT ESTABLISHMENT AND MAINTENANCE

General

1.1 Responsibilities

General

Requirement: Provide plant establishment for a 52 week period

1.2 Interpretation

Definitions

General: For the purpose of this worksection the following definitions apply:

- Plant establishment period: The period between the date of practical completion and the end of the defects liability period.

1.3 Submissions

Execution details

Notice: Provide two days notice of the following operations:

- Application of herbicide.

- Application of fertiliser.

- Watering.

- Each site maintenance visit.

Log book

Records: Log the following on a weekly basis:

- Description, time and method of application of toxic material.

- Maintenance work details.

- Inclement weather to verify inability to carry out work within the specified time frame.

Availability: Upon request.

Monitoring program

General: Provide a monitoring program developed by a specialist monitoring consultant and incorporating the following:

- Photographic record including:

Colour photographs.

Documented monitoring locations and photograph angles.

Reporting periods including photographic records at the following:

Before commencement of the works.

Date of practical completion.

Three monthly intervals during the plant establishment period.

Date of final completion.

Benchmark definition based on remnant communities.

Replicated measurements over time and comparative analysis with regard to the benchmark.

Specialist consultant: Submit the name, qualifications including research papers and scientific publication details, and contact details of the specialist monitoring consultant.

Replacement plants

Species: Provide written certification that all plant material is true to the required species and type.

1.4 Inspection

Notice

Inspection: Give notice so that inspection of the contract area may be made at the following:

- Date of practical completion.

- Three monthly intervals during the plant establishment period.

- Date of final completion.

2 Execution

2.1 General

Special instructions

Priority: If instructed by the contract administrator, attend to certain areas and procedures as a priority. Obtain approval for additional costs before commencement of works.

Reporting

Monthly report: Submit regular reports by the last Friday of each month:

- Of the general status of works.

- Include soil test results as required for the fertilising programs.

Plant replacement requirements.

Incident reports: Report immediately verbally and confirm in writing any disturbance or incidence affecting or likely to affect the day to day scheduling of works.

Disruption of works by others

Other contractors: Make arrangements to work around the disturbance.

2.2 Planting works

Planting

Planting: Ensure the general appearance and presentation of the landscape and the quality of plant material at date of practical completion is maintained for the full planting establishment period.

Existing plant material: Maintain existing planting and grass within the landscape contract area as specified for the corresponding classifications of new grassland or planting.

Replacements: Replace failed, dead and/or damaged plants at maximum 3 week intervals as necessary throughout the full plant establishment period.

Pruning

Prune: To AS 4373 and as documented in the Pruning schedule.

Fertilising

Soil tests: Take samples from both planting beds and lawn areas and conduct tests.

Fertilising: Base the fertilisation program on the soil testing results. Fertilise trees once every two years. Generally apply an all purpose fertiliser of N:P:K (Nitrogen-Phosphorus-Potassium) 10:4:6 at recommended rates. Alternatively apply 12 month slow release fertiliser at the manufacturer's recommended rate. Apply all purpose fertiliser to shrubs annually in two bands and cultivated into the soil 100 mm deep.

Season: Fertilise shrubs and trees in September and March according to their seasonal growth requirement.

Insect and disease control

Period for treatment: Until the problem has been eliminated.

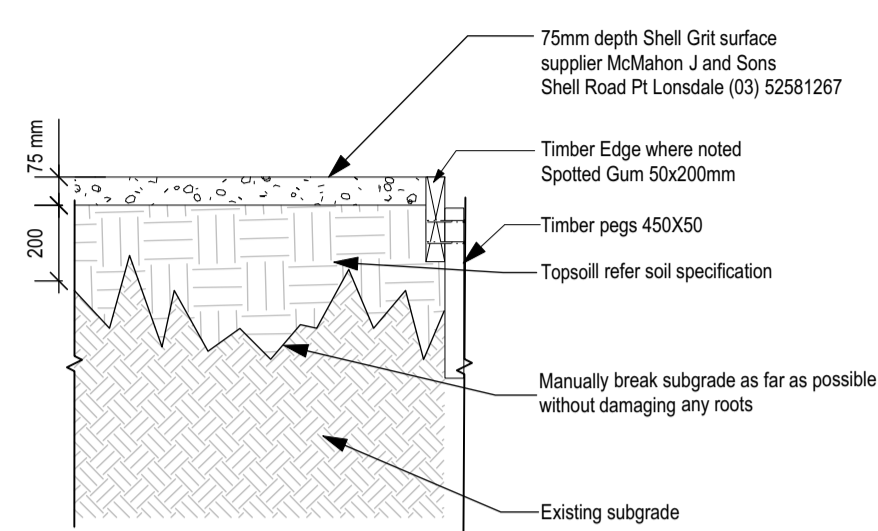
Chemical spray: Apply outside of normal working hours.

Revision	Date	Issue Note
PRELIM	07.08.20	PRELIMINARY
T1	07.10.20	PRELIMINARY
C1	29.04.21	PRELIMINARY

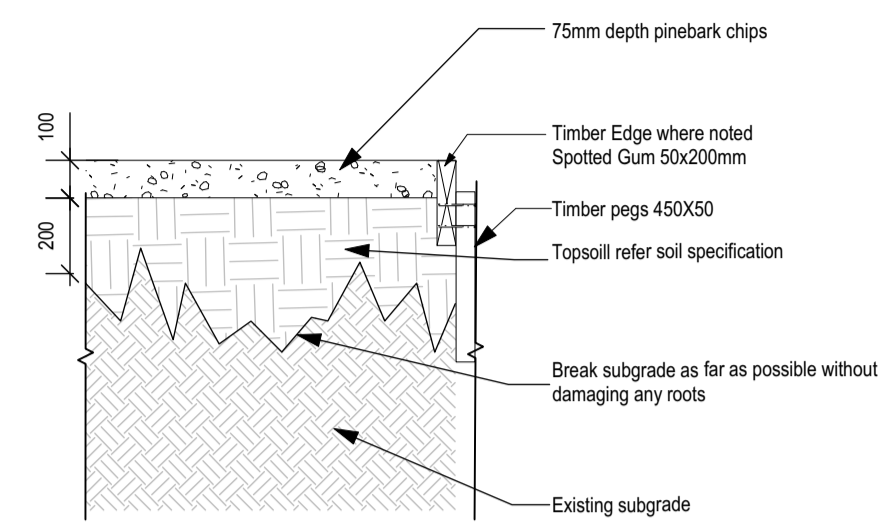
drawing title
PLANTING SCHEDULE AND NOTES

project			
QUEENSLIFFE COMMUNITY HUB			
#1 HESSE ST QUEENSLIFFE			
drawing no.			
date	drawn by	drawing no.	rev
19.06.20	SE		
scale		project	
NTS		279	
		CD04	C1

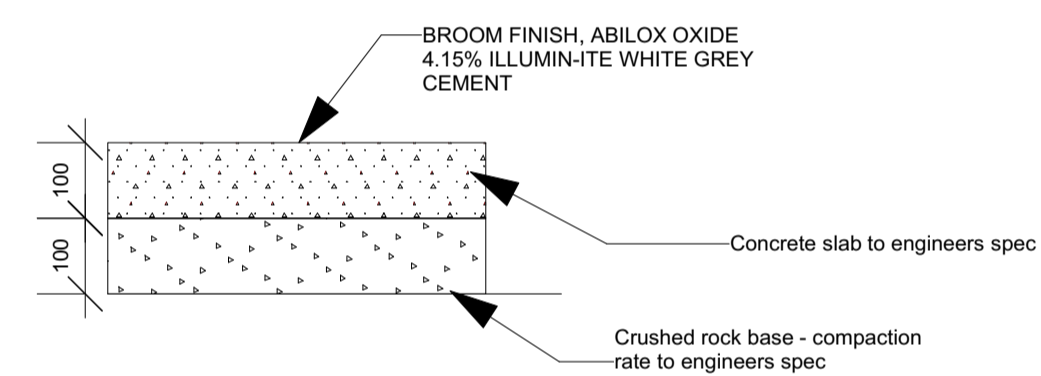
copyright 2021



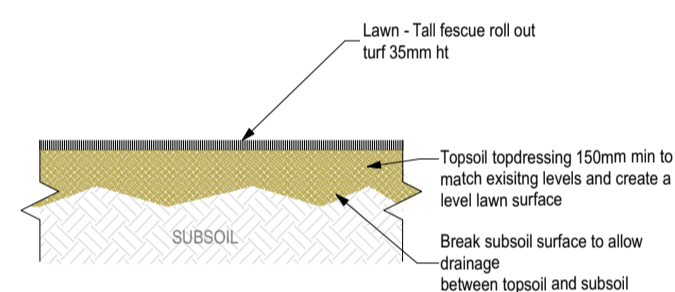
1 SHELL GRIT GARDEN BED
CD05 Scale: 1:20



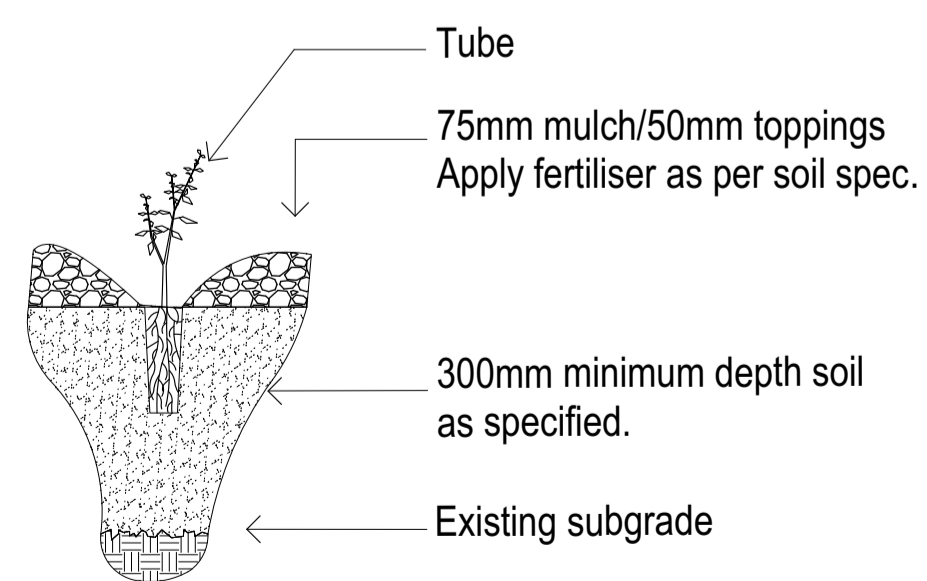
2 MULCHED GARDEN BED ORGANIC
CD05 Scale: 1:20



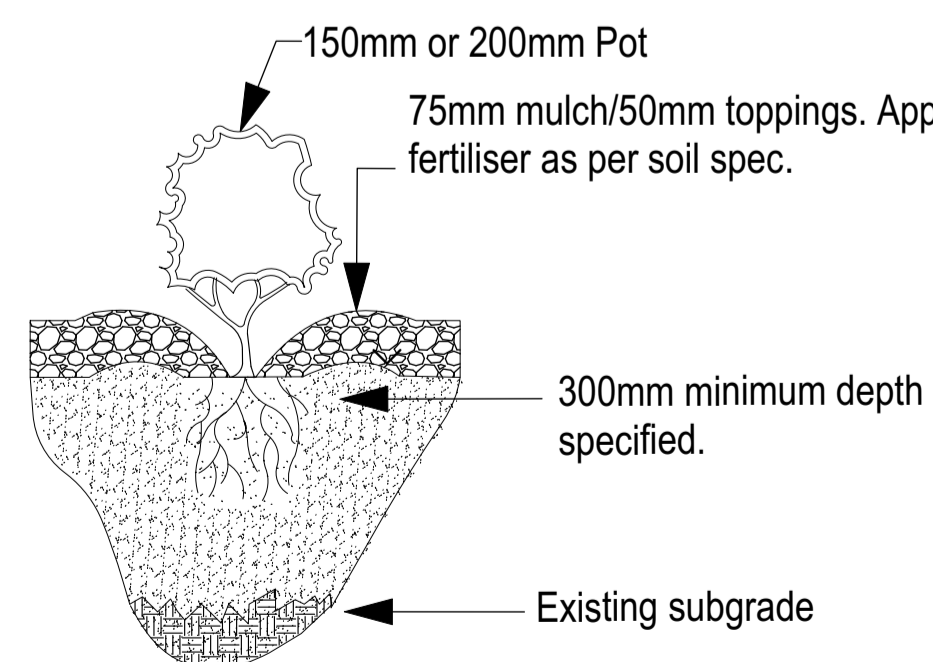
3 CONCRETE FINISH
CD05 Scale: 1:10



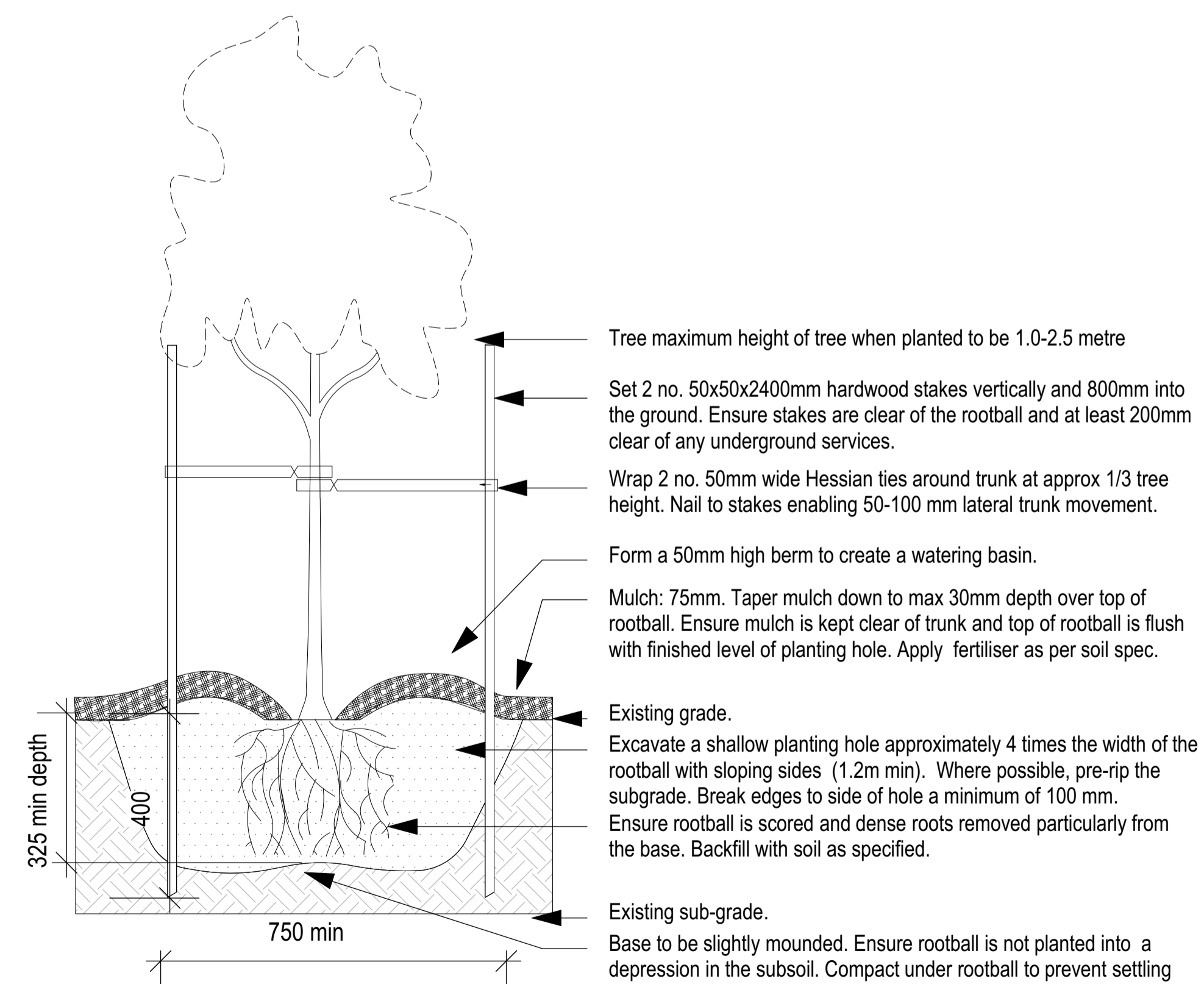
7 MULCHED GARDEN BED ORGANIC
CD05 Scale: 1:20



4 TUBESTOCK PLANTING DETAIL
CD05 Scale: 1:10



5 140-200MM POT PLANTING DETAIL
CD05 Scale: 1:10



6 ADVANCED TREE FROM 300MM POT PLANTING DETAIL
CD05 Scale: 1:10

Revision	Date	Issue Note
PRELIM	07.08.20	PRELIMINARY
T1	07.10.20	PRELIMINARY

drawing title
PLANTING SCHEDULE AND NOTES

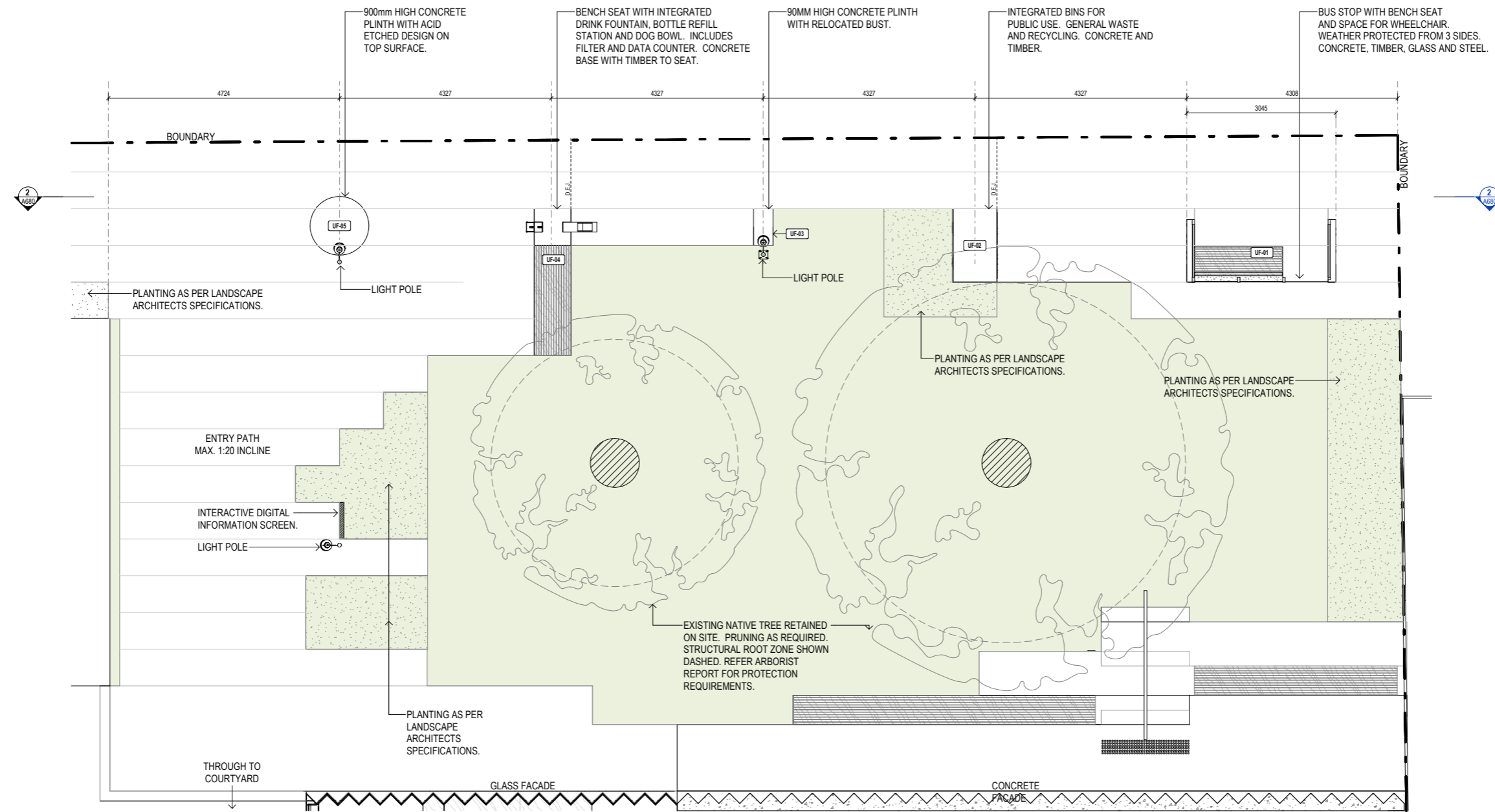
project
QUEENSLIFFE COMMUNITY HUB
at
HESSIE ST QUEENSLIFFE
for
KTA

date	drawn by	drawing no.	rev
19.06.20	SE		
scale	project	CD04	C1
NTS	279		

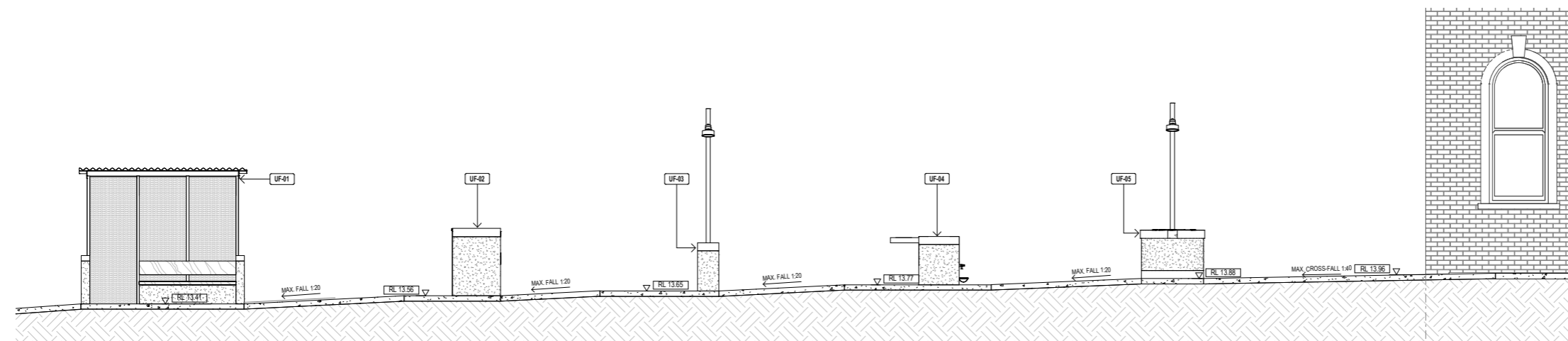
copyright 2021

FOR CONSTRUCTION

URBAN FURNITURE



URBAN FURNITURE GENERAL PLAN



URBAN FURNITURE GENERAL ELEVATION FROM STREET