



Appendix 2

13.3 Victoria Park Planting Schedule 2022–2025

Victoria Park Planting Schedule 2022–2025

Ordinary Meeting of Council

Wednesday 14 December 2022 at 7:00pm

Queenscliff Town Hall

Borough of Queenscliffe



Victoria Park Planting Schedule 2022- 2025

Background

On 29 October 2021, a storm caused considerable damage to the vegetation within Victoria Park requiring removal and lopping of numerous trees. The trees included indigenous Moonah (*Melaleuca lanceolata* ssp. *lanceolata*) and other historical trees of significant age. Council developed the *CP054 Victoria Park Policy* to set out Council's commitment to restoring and managing vegetation within the planting zones of Victoria Park.

The Friends of Victoria Park (FoVP) were successful in sourcing funding to fence the new planting zones (Map 1- Planting Zones) as well as plants for the Western boundary and King Street zones. Responsibilities of the Central zones lays with Council. FoVP have completed two planting days and will assist in future planting days in 2023.



Works to be completed in 2023 are herbicide spraying to kill off grass areas and mulch in preparation for planting in the Central zones. These areas will be planted in the following years with indigenous plant species recognised within Coastal Moonah Woodland Community (DSE 2003) and EVC (Ecological Vegetation Class) 858 Coastal Alkaline Scrub Bioregion (DSE 2022) as well as listed by Bellarine Catchment Network (BCN 2020).

An informal walking track (Map 2- Proposed Walking Track) will meander through the Central zones, with plantings creating a track to enhance the community's use and enjoyment.




Map 1- Planting zones



Victoria Park Plan 2022

-  Vegetation Reserves – Areas to be planted and revegetated following WorkSafe works – No Camping Areas
-  Restricted Camping
-  General Camping

Re-vegetation Reserve Details

-  Vehicle gate
-  Pedestrian access
-  Fence 250m

Zone management

Zones	Responsibility	Until
• Western Upper Zone	FOVP	Oct 2025
• Western Middle Zone	FOVP	Oct 2025
• Western Lower Zone	FOVP	Oct 2025
• Central Upper Zone		
• Central Zone		
• King West Zone		
• King East Zone		

Map 2- Proposed Walking Track



Species and densities

The species and densities of plants (Table 1) have been based on the species which characterize a Coastal Moonah Woodland (DSE 2003) and EVC 858 Coastal Alkaline Scrub Bioregion (DSE 2004). Friends of Victoria Park have conducted two planting days with plants and densities (Table 1).

Through the central zones informal plantings will form clusters and patches to give a “woodland” feel. The plantings will create a representation of a Moonah woodland and form a walking track through the central areas. The existing vehicle access tracks will remain to provide ongoing maintenance and emergency access.

Two species, Seaberry Saltbush (*Rhagodia candolleana*) and Bower Spinach (*Tetragonia implexicoma*) are recommended species listed for “Moonah” woodland. These two species are small shrubs to ground covers but will not be included in the species list for the Central zones. The Seaberry Saltbush and Bower Spinach exist within the Central zones and due to their “weedy” nature are smothering existing trees. Recommendation from Inspecting Arborist (Woodland Trees) and a local Horticulturist (J.Hurse) are to remove these species from future planting list for the area. Minimising these species will allow ease of future tree inspections and reduce smothering to increase seedlings survival.

Existing trees in the central zones are aged between semi mature to senescent (end of life) (Table 2). To ensure a healthy woodland and strong tree canopy, plantings of trees should be staggered over the coming years to allow for a good range of age distribution.

In 2023 the understorey species (green cells- Table 1) will be planted followed by tree planting in 2024 and 2025. This should assist in providing a good range of age distribution and extensive tree canopy.

As of September 2022, aerial imagery baseline canopy cover is 38% of the 0.66 hectares of revegetation zones at Victoria Park. Coastal Moonah Woodland is defined as a low open forest (DSE 2003) with estimates of 30-70% canopy cover (ANBG 2015).

Creating a broad representation of a Moonah woodland over the coming years with new plantings should exceed estimated canopy cover for a low open forest. An approximate prediction is canopy cover reaching 104% within the next 10 years (Table 3). No reduction to canopy cover has been calculated but could occur due to the mature and senescent existing trees.

Following maps (Maps 3,4,5 and 6) present a simplified planting plan for trees and understorey (Shrubs, Herbs, Groundcovers and Grasses) for the central revegetation zones.

Table 1- Species and number of plants

Form	Common Name	Scientific Name	EVC % Cover	FoVP (Current Plantings Nov 2022)	Totals	Central Zones	Totals
Trees	Moonah	<i>Melaleuca lanceolata ssp. lanceolata</i>	30	80	209	10	40
	Coast Beard heath	<i>Leucopogon parviflorus</i>		4		5	
	Coast Wirilda	<i>Acacia retinodes var. uncifolia</i>		80		10	
	Lightwood Wattle	<i>Acacia implexa</i>		15		5	
	Sweet Bursaria	<i>Bursaria spinosa</i>		30		10	
Shrubs	Rare/Coast Bitter Bush	<i>Adrian quadripartita</i>	up to 15%	0	60	20	130
	Thyme rice-flower	<i>Pimelea serphyllifolia sub sp. Serphyllifolia</i>		0		20	
	Seaberry Saltbush	<i>Rhagodia candolleana</i>		0		0	
	Coast Pomaderris	<i>Pomaderris paniculosa</i>		20		50	
	Hop Goodenia	<i>Goodenia ovata</i>		20		20	
	White Correa	<i>Correa alba</i>		20		20	
Herbs & Groundcovers	Karkalla	<i>Carpobrotus rossii</i>	5%	0	0	10	50
	Kidney weed	<i>Dichondra repens</i>		0		10	
	Variable/Dune Groundsel	<i>Senecio pinnatifolius</i>		0		10	
	Coast Swainson-pea	<i>Swainsona lessertiifolia</i>		0		10	
	Bower Spinach	<i>Tetragonia implexicoma</i>		0		0	
	Coast Bonefruit	<i>Threlkeldia diffusa</i>		0		10	
Grasses/Tufts	Wallaby-grass	<i>Austrodanthonia sp.</i>	5-20%	0	80	10	60
	Spear-grass	<i>Austrostipa flavescens</i>		40		10	
	Coast Flax-Lily	<i>Dianella brevicaulis</i>		40		10	
	Knobby Club-rush	<i>Isolepis nodosa</i>		0		10	
	Coast Sword-sedge	<i>Lepidosperma gladiatum</i>		0		10	
	Trailing Coast Poa	<i>Poa poiformis var. ramifer</i>		0		10	

Species in red- not included

Note: If species are not available, increased numbers of other species in form type will be increased.

Table 2-Age Distribution- Central Zone

Arborist Tree Number	Common Name	Species	Age
56	Moonah	<i>Melaleuca lanceolata</i>	Senescent
57	Tuart	<i>Eucalyptus gomphocephala</i>	Mature
58	Dropping Sheoak	<i>Allocasuarina verticillata</i>	Mature
59	Stone Pine	<i>Pinus pinea</i>	Mature
72	Moonah	<i>Melaleuca lanceolata</i>	Senescent
73	Moonah	<i>Melaleuca lanceolata</i>	Senescent
74	Moonah	<i>Melaleuca lanceolata</i>	Senescent
47	Moonah	<i>Melaleuca lanceolata</i>	Senescent
48	Moonah	<i>Melaleuca lanceolata</i>	Senescent
49	Moonah	<i>Melaleuca lanceolata</i>	Senescent
51	Dropping Sheoak	<i>Allocasuarina verticillata</i>	Mature
77	Moonah	<i>Melaleuca lanceolata</i>	Senescent
78	Moonah	<i>Melaleuca lanceolata</i>	Semi Mature

Table 3-Estimated canopy cover (5-10yrs)

Victoria Park	Park area (m ²)	Canopy coverage (m ²)	% Canopy cover	Increase
Total Park area	18069	4928	27%	
Replanting Area	6676	2529	38%	
Replanting Area 5-10 yrs	6676	6974	104%	67%

Estimate canopy cover				
Species	Average Canopy diameter	Covert m ²	No. of plants	Canopy cover (m ²) 5-10 yrs
Moonah	4	13	90	1131
Coast Wirilda	6	28	90	2544
Lightwood Wattle	7	38	20	770
			TOTAL	4445

Central Revegetation Zones



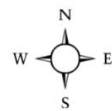
Legend



Friends of Victoria Park
Planting zone



Central Revegetation
Zones



Central Revegetation Zone 1



Legend



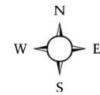
Tree Species



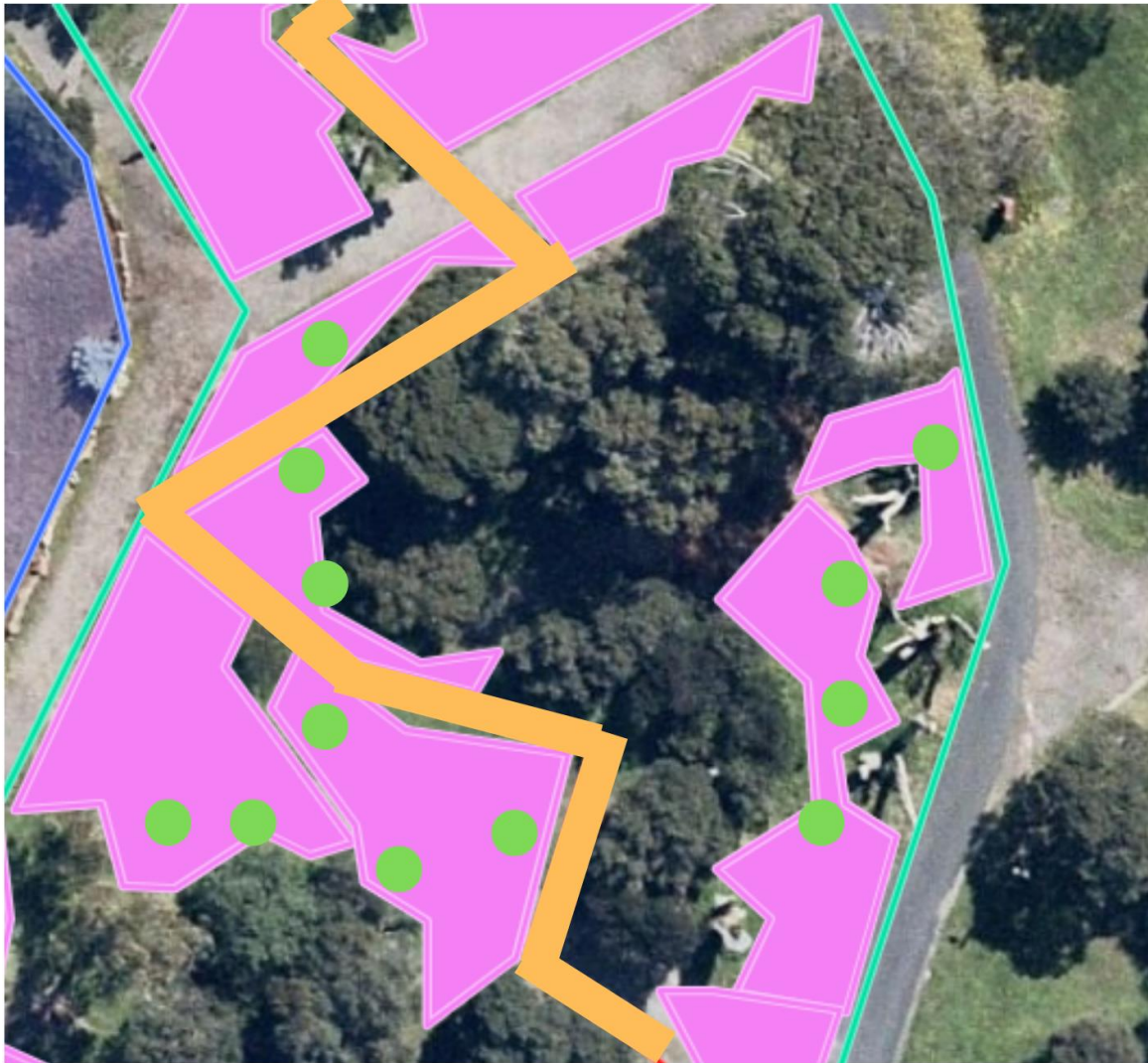
Understorey Species- Shrubs, Herbs,
Groundcovers and Grass



Walking Track



Central Revegetation Zone 2



Legend



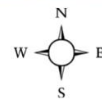
Tree Species



Understorey Species- Shrubs, Herbs,
Groundcovers and Grass



Walking Track



Central Revegetation Zone 3



Legend



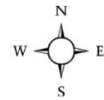
Tree Species



Understorey Species- Shrubs, Herbs,
Groundcovers and Grass



Walking Track



GANTT CHART Victoria Park Planting 2022-2023

TASKS	SUMMER			AUTUMN			WINTER			SPRING		
	DEC	JAN	FEB	MAR	APR	MAY	JUN	JUL	AUG	SEP	OCT	NOV
2022												
INSTALL FENCE												
MAINTENANCE												
PLANTING												
2023												
WEED CONTROL												
MULCH												
UNDERSTOREY PLANTING												
MAINTENANCE												

GANTT CHART Victoria Park Planting 2024-2025

TASKS	SUMMER			AUTUMN			WINTER			SPRING		
	DEC	JAN	FEB	MAR	APR	MAY	JUN	JUL	AUG	SEP	OCT	NOV
2024												
MAINTENANCE	█			█			█			█		
TREE PLANTING					█	█	█	█				
2025												
MAINTENANCE	█			█			█			█		
TREE PLANTING					█	█	█	█				

References

Australia National Botanic Gardens (ANBG) 2015. Information about Australia's Flora, The Australian Environment,

<https://www.anbg.gov.au/aust-veg/veg-map.html>

Department of Sustainability and Environment (DSE)2003. Action Statement Flora and Fauna Guarantee Act 1998 – No 141,

www.environment.vic.gov.au/_data/assets/pdf_file/0021/32448/Coastal_Moonah_Woodland_.pdf

Department of Sustainability and Environment (DSE) 2004. EVC/Bioregion Benchmark for Vegetation Quality Assessment, Page 75-76,

www.environment.vic.gov.au/_data/assets/pdf_file/0031/48739/OtP_EVCs_combined.pdf

Bellarine Catchment Network (BCN) 2020, Coastal Plants of Bellarine Peninsula Booklet, Bellarine Catchment Network/Bellarine Landcare Group