

BOROUGH OF QUEENSCLIFFE

MURRAY ROAD SPEED REDUCTION IMPROVEMENTS

LOCATION:
MURRAY ROAD, POINT LONSDALE
QUEENSCLIFF, VIC



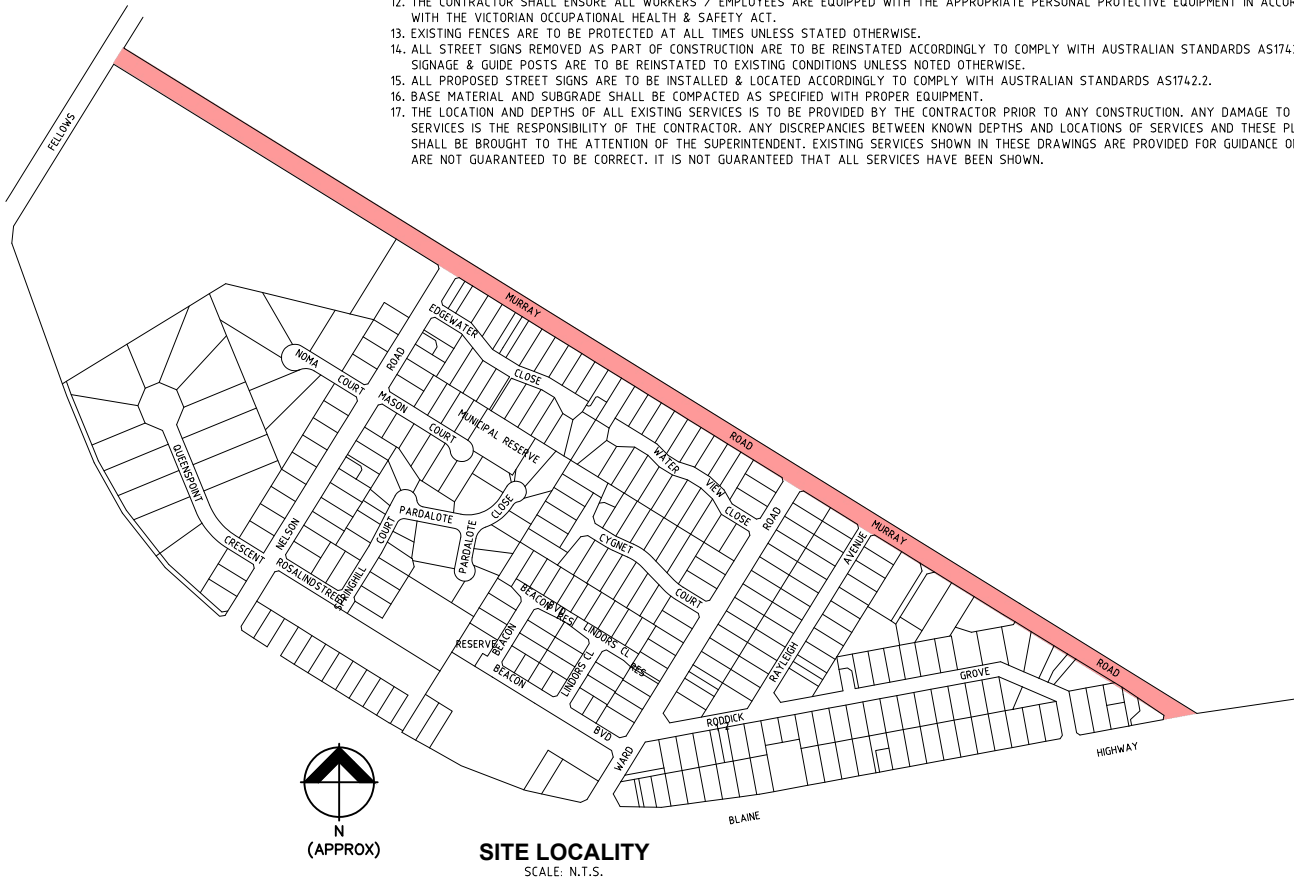
RELEASE DETAILS				
P4	FOR CONSTRUCTION	01.07.24	FOR CONSTRUCTION	
P3	PRELIMINARY FOR APPROVAL	21.06.24	PRELIMINARY ONLY	
P2	PRELIMINARY FOR APPROVAL	19.06.24	PRELIMINARY ONLY	
P1	PRELIMINARY ONLY FOR DISCUSSION	14.06.24	PRELIMINARY ONLY	
REV	DESCRIPTION	DATE	DOCUMENT STATUS	APP.

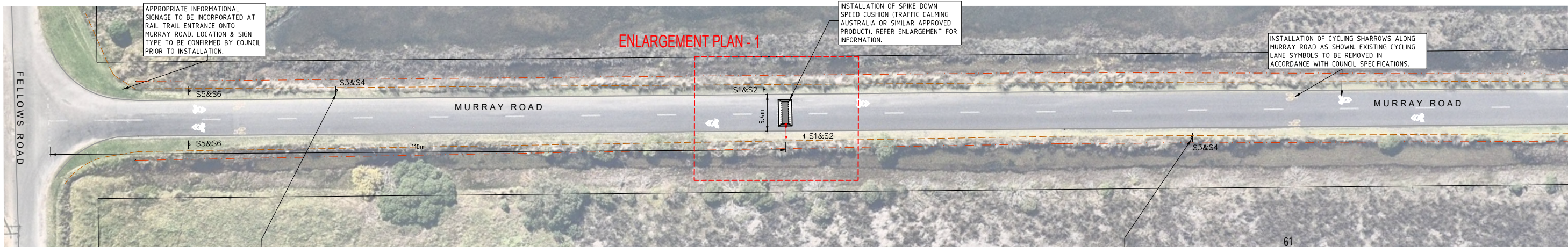
Project No.: 23083

Drawing Number	Sheet Number	Plan Title
23083_SD00	0	COVER PLAN & DRAWING INDEX
23083_SD01	1	FELLOWS ROAD TO NELSON ROAD
23083_SD02	2	NELSON ROAD TO WARD ROAD
23083_SD03	3	WARD ROAD TO BELLARINE HIGHWAY

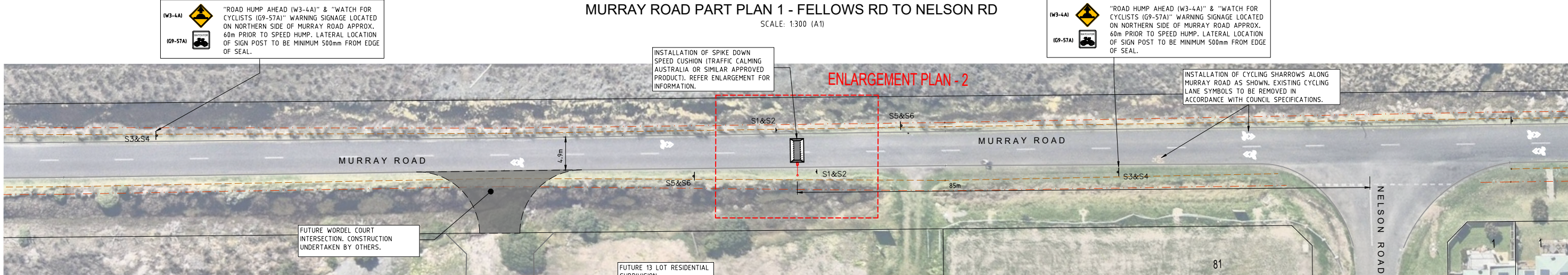
FOR CONSTRUCTION

- GENERAL NOTES:
1. ALL DIMENSIONS ARE IN METERS. LEVELS ARE TO AUSTRALIAN HEIGHT DATUM (AHD) UNLESS OTHERWISE NOTED.
 2. ALL WORKS SHALL BE CARRIED OUT IN ACCORDANCE WITH THIS SPECIFICATIONS AND TO THE SATISFACTION OF BOROUGH OF QUEENSCLIFFE. IN THE EVENT THESE SPECIFICATIONS DO NOT COVER THE WORKS, THE WORKS SHALL BE DONE IN ACCORDANCE WITH THE AUSTRALIAN STANDARDS OR VICROADS SPECIFICATIONS FOR SIMILAR WORKS.
 3. ALL EXCAVATED AREAS ARE TO BE REINSTATED TO MATCH PRE-WORKS STATE AND LEVELS.
 4. ALL WASTE MATERIAL, RUBBISH AND SPOIL SHALL BE REMOVED FROM SITE.
 5. REASONABLE CARE SHALL BE TAKEN BY THE CONTRACTOR TO PRESERVE ANY SURVEY MARKERS. THE CONTRACTOR IS RESPONSIBLE FOR THE COST TO REPLACE IF DEEMED NECESSARY.
 6. THE CONTRACTOR SHALL PREPARE A SUITABLE TRAFFIC MANAGEMENT PLAN AND APPROVALS SHALL BE OBTAINED FROM BOROUGH OF QUEENSCLIFFE & RELEVANT AUTHORITIES BEFORE CONSTRUCTION COMMENCES.
 7. SERVICE PROTECTION / REINSTATEMENT WORKS SHALL BE IN ACCORDANCE WITH THE RELEVANT AUTHORITY STANDARDS, WHERE APPLICABLE.
 8. THE CONTRACTOR SHALL UNDERTAKE WORKS IN A MANNER THAT MINIMISES DAMAGES TO EXISTING ASSETS.
 9. ANY DISCREPANCIES IN DIMENSIONS OR DETAILS SHOULD BE BROUGHT TO THE ATTENTION OF THE SUPERINTENDENT FOR CLARIFICATION PRIOR TO ANY WORKS BEING UNDERTAKEN. THE SUPERINTENDENT IS TO BE NOTIFIED PRIOR TO THE COMMENCEMENT OF WORKS, IF THE CONDITIONS ARE DIFFERENT TO THOSE SHOWN ON THE DRAWINGS.
 10. THE CONTRACTOR MUST COMPLY WITH DUTY OF CARE/SAFETY GUIDELINES WHEN WORKING NEAR OVERHEAD/UNDERGROUND POWERCOR ASSETS. NO WORK NEAR OVERHEAD/UNDERGROUND ELECTRICITY IS TO COMMENCE UNTIL 'PERMISSION' HAS BEEN OBTAINED BY POWERCOR. CONTRACTOR MUST ENSURE THE CITIPOWER/POWERCOR 'NO GO ZONE' SAFETY PROCEDURE IS FOLLOWED.
 11. THE CONTRACTOR IS TO LIAISE WITH POWERCOR AS REQUIRED IF WORKS ARE WITHIN POTENTIAL 'NO GO ZONES' FOR OVERHEAD OR UNDERGROUND SERVICES. IT IS THE CONTRACTORS RESPONSIBILITY TO OBTAIN NECESSARY PERMITS AND APPLICATIONS WITH POWERCOR/CITIPOWER WHEN WORKING WITHIN THE VICINITY OF OVERHEAD POWER POLES AND CABLES. REFER TO WWW.POWERCOR.COM.AU.
 12. THE CONTRACTOR SHALL ENSURE ALL WORKERS / EMPLOYEES ARE EQUIPPED WITH THE APPROPRIATE PERSONAL PROTECTIVE EQUIPMENT IN ACCORDANCE WITH THE VICTORIAN OCCUPATIONAL HEALTH & SAFETY ACT.
 13. EXISTING FENCES ARE TO BE PROTECTED AT ALL TIMES UNLESS STATED OTHERWISE.
 14. ALL STREET SIGNS REMOVED AS PART OF CONSTRUCTION ARE TO BE REINSTATED ACCORDINGLY TO COMPLY WITH AUSTRALIAN STANDARDS AS1742.2. ALL SIGNAGE & GUIDE POSTS ARE TO BE REINSTATED TO EXISTING CONDITIONS UNLESS NOTED OTHERWISE.
 15. ALL PROPOSED STREET SIGNS ARE TO BE INSTALLED & LOCATED ACCORDINGLY TO COMPLY WITH AUSTRALIAN STANDARDS AS1742.2.
 16. BASE MATERIAL AND SUBGRADE SHALL BE COMPACTED AS SPECIFIED WITH PROPER EQUIPMENT.
 17. THE LOCATION AND DEPTHS OF ALL EXISTING SERVICES IS TO BE PROVIDED BY THE CONTRACTOR PRIOR TO ANY CONSTRUCTION. ANY DAMAGE TO EXISTING SERVICES IS THE RESPONSIBILITY OF THE CONTRACTOR. ANY DISCREPANCIES BETWEEN KNOWN DEPTHS AND LOCATIONS OF SERVICES AND THESE PLANS SHALL BE BROUGHT TO THE ATTENTION OF THE SUPERINTENDENT. EXISTING SERVICES SHOWN IN THESE DRAWINGS ARE PROVIDED FOR GUIDANCE ONLY AND ARE NOT GUARANTEED TO BE CORRECT. IT IS NOT GUARANTEED THAT ALL SERVICES HAVE BEEN SHOWN.



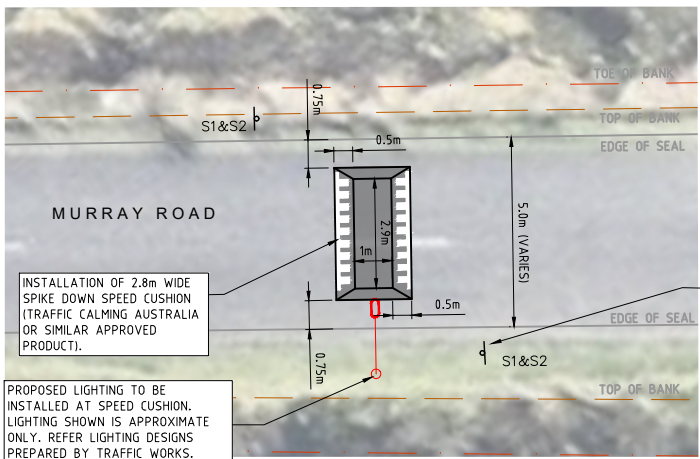
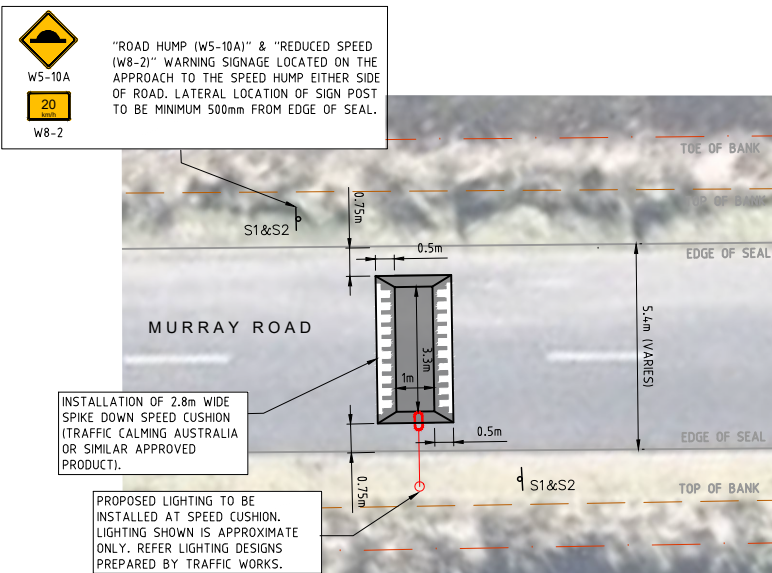


MURRAY ROAD PART PLAN 1 - FELLOWS RD TO NELSON RD
SCALE: 1:300 (A1)



MURRAY ROAD PART PLAN 2 - FELLOWS RD TO NELSON RD
SCALE: 1:300 (A1)

FOR CONSTRUCTION



RELEASE DETAILS

NO.	DESCRIPTION	DATE	DOCUMENT STATUS	APP.
P4	ISSUED FOR CONSTRUCTION	01.07.24	FOR CONSTRUCTION	
P3	PRELIMINARY FOR APPROVAL	21.06.24	PRELIMINARY ONLY	
P2	PRELIMINARY FOR APPROVAL	19.06.24	PRELIMINARY ONLY	
P1	PRELIMINARY ONLY FOR DISCUSSION	14.06.24	PRELIMINARY ONLY	



DESIGNED JH NOV 23
DRAWN HW NOV 23



Scale 1:300 (A1)

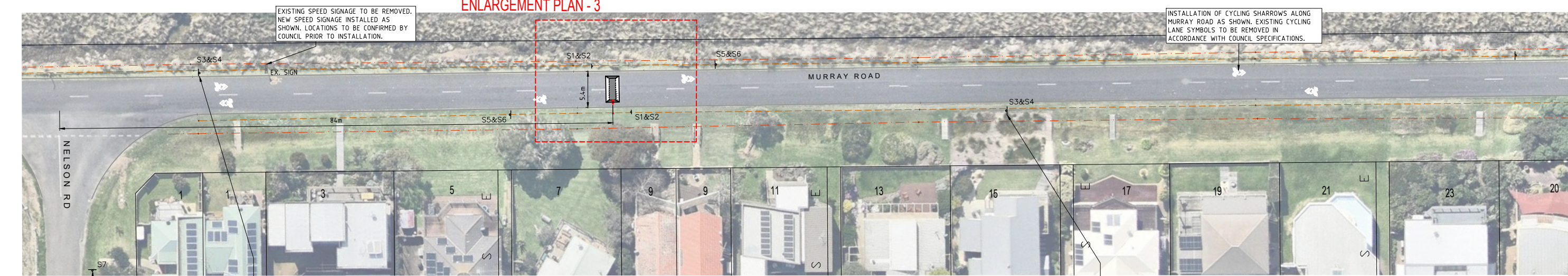
BOROUGH OF QUEENSCLIFFE
MURRAY ROAD SHARED PATH CONCEPTS

MURRAY ROAD
QUEENSCLIFF, VICTORIA
SPEED REDUCTION IMPROVEMENTS
FELLOWS ROAD TO NELSON ROAD

DRAWING NO. 23083.01_SD01
SHEET NO. 01 of 03

REVISION NO. P4
A1
CAD: 23083.01_SD.dwg

ENLARGEMENT PLAN - 3



MURRAY ROAD PART PLAN 3 - NELSON RD TO WARD RD

SCALE: 1:300 (A1)

INSTALLATION OF 50KM/HR SPEED SIGN IN NELSON ROAD TO HIGHLIGHT THE SPEED CHANGE FOR DRIVERS ENTERING FROM MURRAY ROAD. LOCATION TO BE CONFIRMED ONSITE WITH COUNCIL SUPERINTENDENT.

(W3-4A) "ROAD HUMP AHEAD (W3-4A)" & "WATCH FOR CYCLISTS (G9-57A)" WARNING SIGNAGE LOCATED ON NORTHERN SIDE OF MURRAY ROAD APPROX. 60m PRIOR TO SPEED HUMP. LATERAL LOCATION OF SIGN POST TO BE MINIMUM 500mm FROM EDGE OF SEAL.

(W3-4A) "ROAD HUMP AHEAD (W3-4A)" & "WATCH FOR CYCLISTS (G9-57A)" WARNING SIGNAGE LOCATED ON NORTHERN SIDE OF MURRAY ROAD APPROX. 60m PRIOR TO SPEED HUMP. LATERAL LOCATION OF SIGN POST TO BE MINIMUM 500mm FROM EDGE OF SEAL.

ENLARGEMENT PLAN - 4



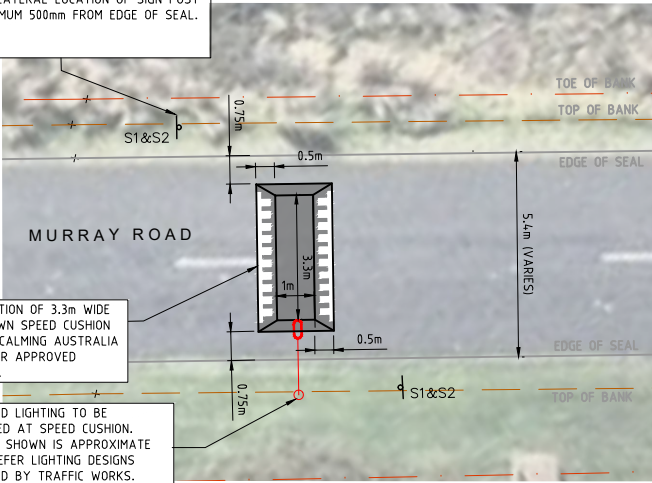
MURRAY ROAD PART PLAN 4 - NELSON RD TO WARD RD

SCALE: 1:300 (A1)

LEGEND

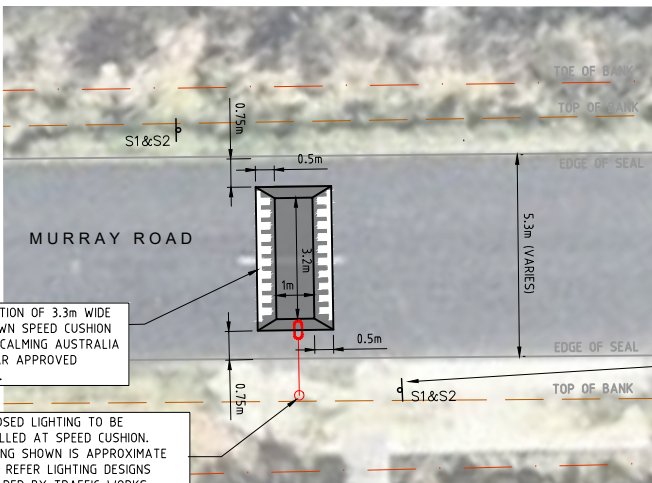
- EXISTING
- EDGE OF SEAL/FOOTPATH
 - BOTTOM OF BANK (BB)
 - TOP OF BANK (TB)
- PROPOSED
- SIGN POST
 - LIGHT POLE (REFER LIGHTING DESIGN BY OTHERS)
 - SPIKE DOWN SPEED CUSHION
 - SIGN No. 1 (W5-10A) 600mm
 - SIGN No. 2 (W8-2) 600x400mm
 - SIGN No. 3 (W3-4A) 600mm
 - SIGN No. 4 (G9-57A) 900mmx800mm
 - SIGN NO.5 (R4-1A) 40KM/HR 450mm x 600mm
 - SIGN NO.6 (R4-V119) 400mm x 600mm
 - SIGN NO.7 (R4-1A) 50KM/HR 450mm x 600mm

"ROAD HUMP (W5-10A)" & "REDUCED SPEED (W8-2)" WARNING SIGNAGE LOCATED ON THE APPROACH TO THE SPEED HUMP EITHER SIDE OF ROAD. LATERAL LOCATION OF SIGN POST TO BE MINIMUM 500mm FROM EDGE OF SEAL.



ENLARGEMENT PLAN 3

SCALE: 1:100 (A1)



ENLARGEMENT PLAN 4

SCALE: 1:100 (A1)

FOR CONSTRUCTION

"ROAD HUMP (W5-10A)" & "REDUCED SPEED (W8-2)" WARNING SIGNAGE LOCATED ON THE APPROACH TO THE SPEED HUMP EITHER SIDE OF ROAD. LATERAL LOCATION OF SIGN POST TO BE MINIMUM 500mm FROM EDGE OF SEAL.



RELEASE DETAILS

NO.	DESCRIPTION	DATE	DOCUMENT STATUS	APP.
P4	ISSUED FOR CONSTRUCTION	01.07.24	FOR CONSTRUCTION	
P3	PRELIMINARY FOR APPROVAL	21.06.24	PRELIMINARY ONLY	
P2	PRELIMINARY FOR APPROVAL	19.06.24	PRELIMINARY ONLY	
P1	PRELIMINARY ONLY FOR DISCUSSION	14.06.24	PRELIMINARY ONLY	



DESIGNED JH NOV 23
DRAWN HW NOV 23



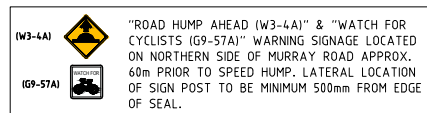
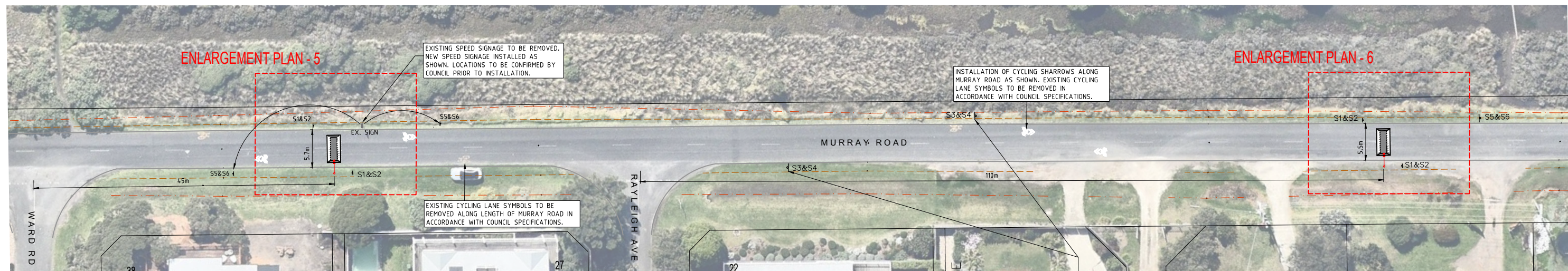
Scale 1:300 (A1)

BOROUGH OF QUEENSCLIFFE
MURRAY ROAD SHARED PATH CONCEPTS

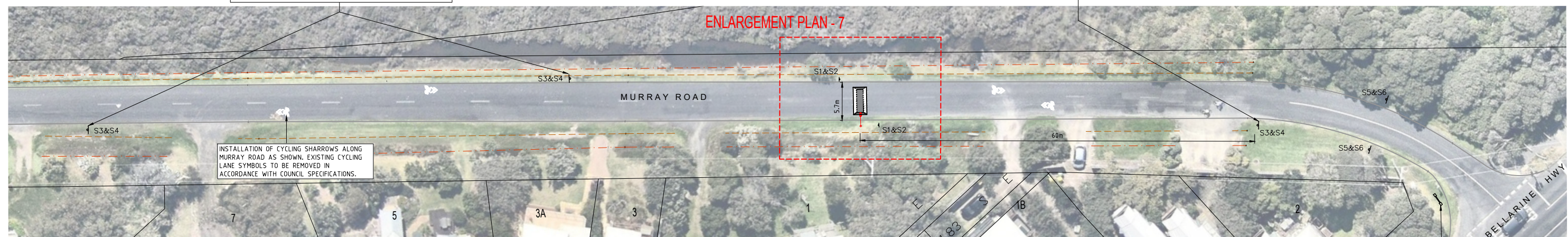
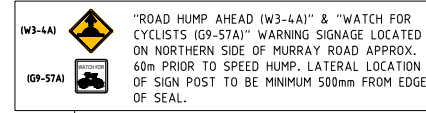
MURRAY ROAD
QUEENSCLIFF, VICTORIA
SPEED REDUCTION IMPROVEMENTS
NELSON ROAD TO WARD ROAD

DRAWING NO. 23083.01_SD02
SHEET NO. 02 of 03

REVISION NO. P4
A1
CAD: 23083.01_SD.dwg



MURRAY ROAD PART PLAN 5 - WARD RD TO BELLARINE HWY
SCALE: 1:300 (A1)



MURRAY ROAD PART PLAN 6 - WARD RD TO BELLARINE HWY
SCALE: 1:300 (A1)

LEGEND

EXISTING

EDGE OF SEAL/FOOTPATH
BOTTOM OF BANK (BB)
TOP OF BANK (TB)
PROPOSED
SIGN POST

LIGHT POLE (REFER LIGHTING DESIGN BY OTHERS)

SPIKE DOWN SPEED CUSHION

SIGN No. 1 (W5-10A) 600mm

SIGN No. 2 (W8-2) 600x400mm

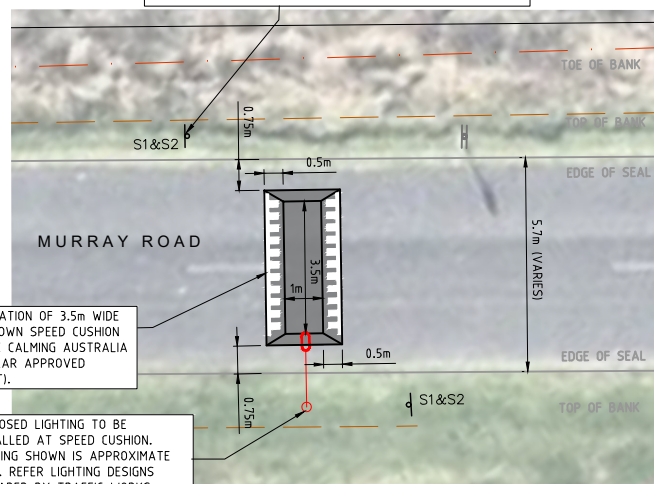
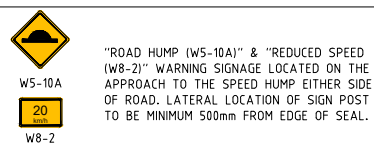
SIGN No. 3 (W3-4A) 600mm

SIGN No. 4 (G9-57A) 900mmx800mm

SIGN NO.5 (R4-1A) 40KM/HR 450mm x 600mm

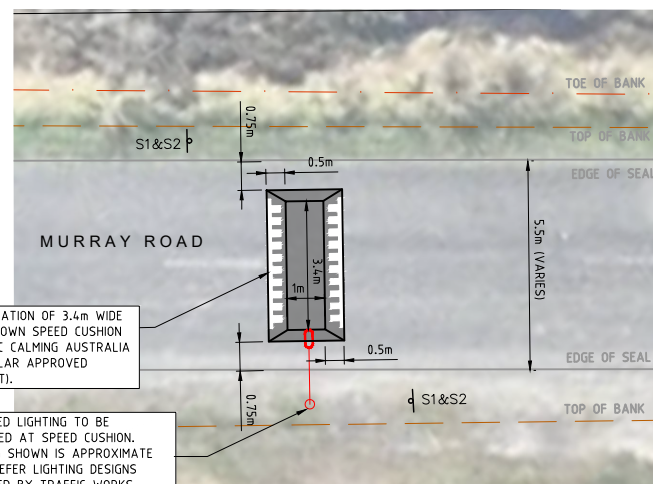
SIGN NO.6 (R4-V119) 400mm x 600mm

- ALL LINE-MARKING TO BE UNDERTAKEN IN ACCORDANCE WITH 1742.2.
- LINE MARKING TO COMPLY WITH AUSTRALIAN STANDARDS. LONG LIFE THERMOPLASTIC PAINT TO BE USED. PAINT TYPE AND INSTALLATION METHOD TO BE APPROVED BY SUPERINTENDENT PRIOR TO INSTALLATION.
- ALL SIGNAGE SIZE AND LOCATIONS ARE TO COMPLY WITH AUSTRALIAN STANDARDS AS1742.2 UNLESS NOTED OTHERWISE.

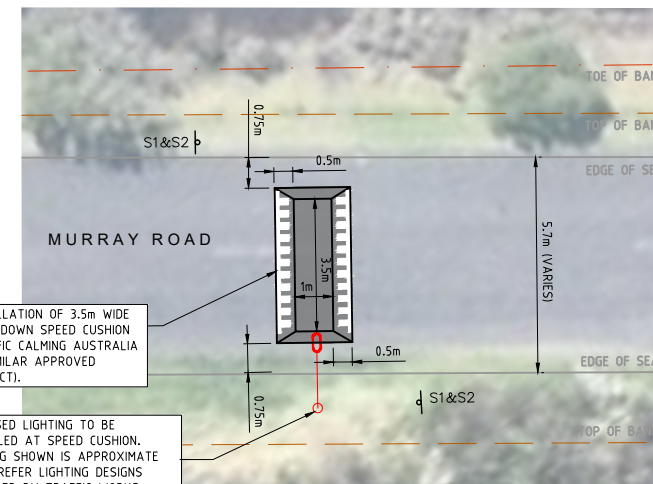


ENLARGEMENT PLAN 5
SCALE: 1:100 (A1)

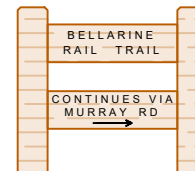
FOR CONSTRUCTION



ENLARGEMENT PLAN 6
SCALE: 1:100 (A1)



ENLARGEMENT PLAN 7
SCALE: 1:100 (A1)



INSTALLATION OF APPROPRIATE INFORMATIONAL SIGNAGE TO BE INCORPORATED AT RAIL TRAIL ENTRANCE ONTO MURRAY ROAD. PROPOSED REDGUM SLEEPER STYLE SIGN TO BE CONSISTENT WITH RAIL TRAIL SIGNAGE. SIGN ARRANGEMENT & LOCATION TO BE CONFIRMED BY COUNCIL.



RELEASE DETAILS

NO.	DESCRIPTION	DATE	DOCUMENT STATUS	APP.
P4	ISSUED FOR CONSTRUCTION	01.07.24	FOR CONSTRUCTION	
P3	PRELIMINARY FOR APPROVAL	21.06.24	PRELIMINARY ONLY	
P2	PRELIMINARY FOR APPROVAL	19.06.24	PRELIMINARY ONLY	
P1	PRELIMINARY ONLY FOR DISCUSSION	14.06.24	PRELIMINARY ONLY	



DESIGNED JH NOV 23
DRAWN HW NOV 23



0 3 6 12
Scale 1:300 (A1)

BOROUGH OF QUEENSCLIFFE
MURRAY ROAD SHARED PATH CONCEPTS

MURRAY ROAD
QUEENSCLIFF, VICTORIA
SPEED REDUCTION IMPROVEMENTS
WARD ROAD TO BELLARINE HIGHWAY

DRAWING NO. 23083.01_SD03
SHEET NO. 03 of 03

REVISION NO. P4
A1
CAD: 23083.01_SD.dwg