

GENERAL NOTES

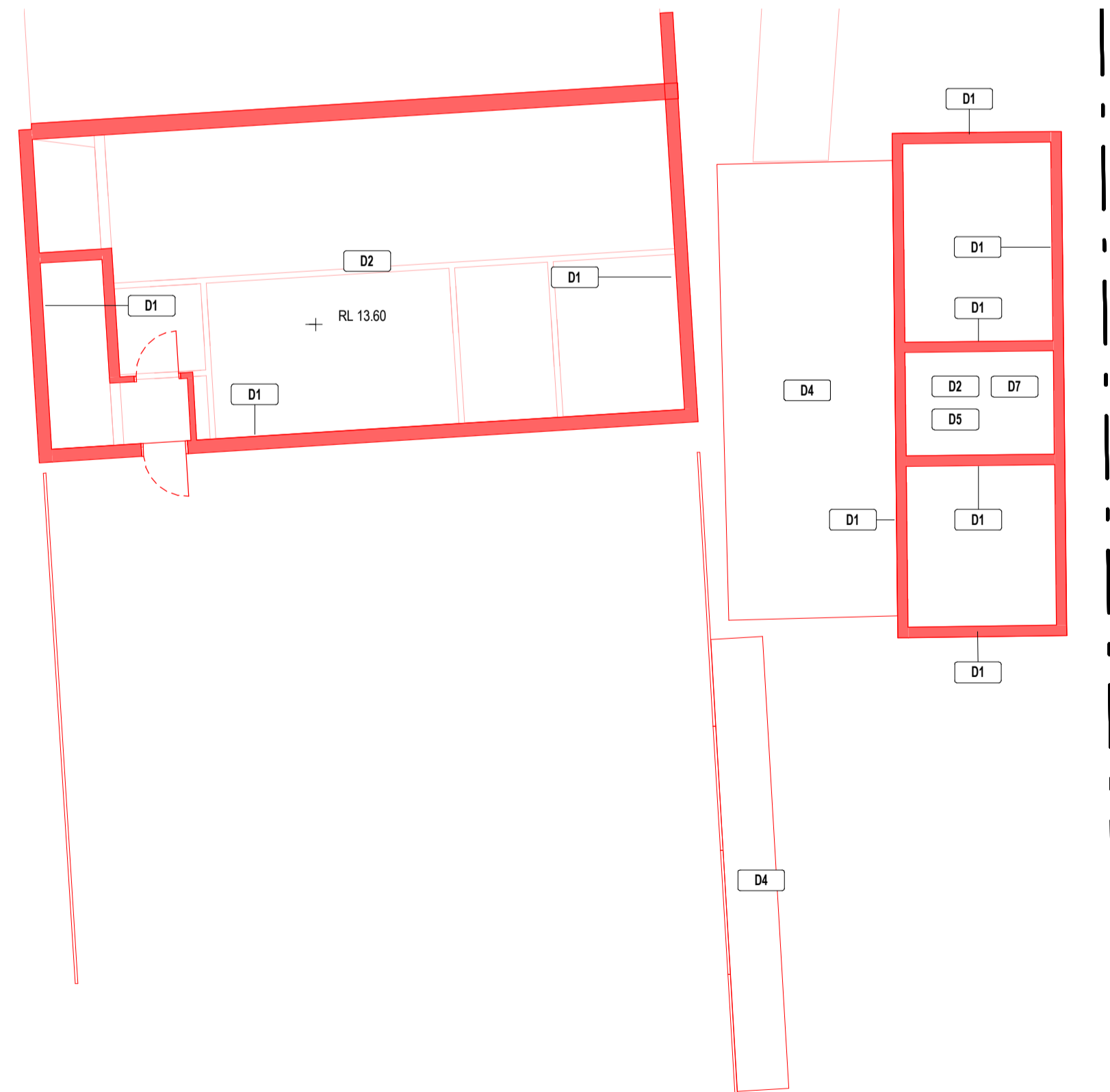
REFER TO A300 FOR GENERAL NOTES APPLICABLE TO THIS DRAWING.

LEGEND - DEMOLITION PLAN	
CODE	DEMOLITION/RETENTION NOTE
D1	DEMOLISH WALLS AND ALL ASSOCIATED STRUCTURE AND OPENINGS.
D2	DEMOLISH FLOOR AND REMOVE ANY FOOTINGS.
D3	SEAL PANELS ON ROOF TO BE RETAINED FOR REUSE IN PROPOSED DESIGN.
D4	REMOVE EXTERNAL PAVING OR GROUND COVER.
D5	WET AREA FIXTURES AND FITTINGS TO BE REMOVED AND PLUMBING ADEQUATELY REMOVED.
D6	STAIRS TO BE REMOVED.
D7	REMOVE ROOF AND ASSOCIATED STRUCTURE.
D8	TREE TO BE REMOVED.
D9	RETAINING TO BE REMOVED AND REPLACED AS PER PLANS.
D10	DEMOLISH BUS STOP SHELTER. BUS STOP SIGNAGE AND ACCESS TO FOOTPATH RETAINED THROUGHOUT CONSTRUCTION.
D11	SIGN TO BE REMOVED.
D12	RAMP TO BE REMOVED AND GROUND BELOW MADE GOOD.
D13	EXTEND OR CREATE OPENING AND MAKE GOOD EDGES AND SUBROUNDS.
D15	REMOVE DOOR AND PREPARE FOR WINDOW INSTALLATION.
D-R1	REMOVE LOOSE MORTAR AND REPOINT WITH MATCHING MORTAR WHERE REQUIRED.
D-R3	TREE TO BE PROTECTED AND MAINTAINED DURING CONSTRUCTION. REFER ARBORIST REPORT FOR PROTECTING REQUIREMENTS.
D-R4	STATUE TO BE PROTECTED DURING CONSTRUCTION. TBC IF LEFT ON SITE DURING CONSTRUCTION. RELOCATION TO TAKE PLACE DURING LANDSCAPING.
D-R5	LIGHT POST TO BE REMOVED. ENSURE ADEQUATELY PROTECT FROM DAMAGE IN PREPARATION FOR RELOCATION TO LOCATION TBC.
D-R6	RETAIN DOOR FRAME AND REMOVE DOOR LEAF. MAKE GOOD AN REPAIR IF REQUIRED.
D-R7	RETAIN DOOR, WEATHER SEAL AND MAKE GOOD.
D-R8	WHEN REMOVING DAMAGED HERITAGE CEILING LINING IN MAIN SPACE RETAIN CEILING FRAMES FOR POSSIBLE REUSE.
D-R9	TAKE CARE TO RETAIN HERITAGE DETAILS INCLUDING SKIRTING, CORNICES, MOULDINGS, CEILING, CEILING ORNAMENTATION AND EXISTING LIGHT FITTINGS.
DATA	
DC1	
DIS1	
DIS2	
DW1	
DW2	
DW3	

SITE ESTABLISHMENT PLAN - STAGE 1



TEMPORARY FENCING

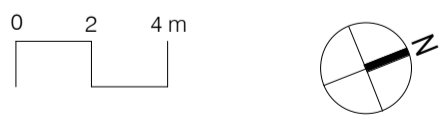


DASHED LINE INDICATES EXTENTS OF DRAWING 2 ON THIS PAGE

2 A300 BASEMENT - EXISTING CONDITIONS + DEMO (DD) 1:100

No.	Date	Description
T1	08.10.20	TENDER ISSUE - T1

TENDER ONLY NOT FOR CONSTRUCTION



KTA
Kerstin Thompson Architects Pty Ltd
277 Queensberry St, Melbourne Australia 3000
T +61 3 8662 8800
kta@kerstinthompson.com
www.kerstinthompson.com

DRAWING TITLE
DEMOLITION PLAN

PROJECT
QUEENSLIFFE HUB
AT 49-57 HESSE STREET, QUEENSLIFFE
BOROUGH OF QUEENSLIFFE

DATE 08.10.20	DRAWN BY KJ	DRAWING NO. A010	REV. T1
SCALE 1:100(A1)	PROJECT 1916	TENDER DOCUMENTATION	

K:Kta project/ copyright 2019