

# Borough Bites

MAY 2024

## 2024 - 2025 Council Budget Next Steps

### In this edition

- 2024–2025 Budget consultation
- Community Grants and Event Sponsorship
- Murray Road consultation
- E-waste collection date
- Queenscliff Traffic Management Strategy
- Grant received for Resilient Community Assets Program
- Coastal Public Access and Risk funding confirmed
- Neighbourhood batteries confirmed
- Small second dwellings
- Capital works update
- Ganes Reserve
- Local government elections

## BUDGET CONSULTATION – COMMUNITY FEEDBACK REPORT

**Our 2024–2025 Budget community feedback report is now available for you to review.**

Consultation with our community plays a vital role in the development of Council's Budget. Across January and February, we asked our residents, rate payers and visitors to let us know what they wanted to see in the 2024–2025 Budget via a survey and over 350 of you responded.

It is pleasing to report that community engagement is up by over 30% from last year, consequently, we are hearing from a broader audience. This feedback provides insight for Councillors and officers and will help guide key decision-making in preparing the 2024–2025 Borough of Queenscliffe Budget. Initial work

has already started, and a draft Budget was endorsed for further community consultation at the Ordinary Meeting of Council in April 2024.

You can read the report here:  
[boq.news/ConsultationReport](http://boq.news/ConsultationReport)

The community is invited to provide submissions to the draft Budget from 26 April until 24 May 2024. There will also be a community presentation on 8 May, 6 pm at Town Hall, where Council and Council officers will speak to the draft Budget and answer any questions the public may have.

We thank everyone who participated for their contribution to the initial survey and look forward to further feedback on the draft Budget.

## Queenscliff Traffic Management Strategy

**Ratio Consultants, with input from Council engineering staff, have developed a draft Traffic Management Strategy for the township of Queenscliff.**

The project is being undertaken in response to a range of community feedback relating to vehicle speeds, traffic volumes and road safety.

The development of the Queenscliff Traffic Management Strategy (QTMS) included a range of data collection, on-site observations, engagement with key stakeholders, and data analysis. Several issues and opportunities have been identified and a prioritised implementation plan has been developed within the QTMS.

This document was placed on public exhibition for a period of 28 days, during which members of the community were invited to make submissions on the paper.

For more information – head to [boq.news/QTMS](http://boq.news/QTMS)

## 2024 Council Meetings

Upcoming Ordinary Meetings of Council will be held at 7:00 pm on the following days:

- Wednesday 22 May 2024
- Wednesday 26 June 2024

- Wednesday 24 July 2024

All meetings will be live-streamed via Zoom and recordings made available on Council's website. For up-to-date information on attending or viewing Council meetings, visit the Borough of Queenscliffe website.



**Borough of Queenscliffe**  
Queenscliff & Point Lonsdale, Victoria, Australia

50 Learmonth Street (PO Box 93) Queenscliff VIC 3225 | Phone: 03 5258 1377  
[www.queenscliffe.vic.gov.au](http://www.queenscliffe.vic.gov.au) | [www.facebook.com/queenscliffe](https://www.facebook.com/queenscliffe)

## Murray Road Shared Use Consultation



## Murray Road Shared Use Consultation

You may have heard that we are looking into options for shared use along Murray Road in Queenscliff.

The purpose of this project is to improve pedestrian safety and comfort along Murray Road, as it is one of the only sections of the Bellarine Rail Trail which is not off-road and requires cyclists and pedestrians to share the road with vehicles.

Council worked with independent traffic consultants to come up with five possible solutions, then asked our community to share what they think and rank each option.

In addition to the survey, Council also ran a series of drop-in sessions in which members of the community could come into Council offices and speak with our Roads and Infrastructure Engineer to discuss the options and provide more detailed feedback.

Officers are now compiling the feedback we received and developing a report for Council.

## Grant Received for Resilient Community Assets Program

The Barwon South West Climate Alliance (BSWCA) has been awarded \$245,200 of grant funding to deliver the Resilient Community Assets Project.

The project, funded through Round 3 of the National Partnership Agreement State and Regional Priority Projects Grants Program, will be delivered by the BSWCA in partnership with its six member councils – Borough of Queenscliffe, Colac Otway Shire, Golden Plains Shire, Surf Coast Shire, Warrnambool City Council and City of Greater Geelong.

The project will focus on key community assets that councils own, manage, or operate for communities. It will assess the resilience of these assets to climate change and extreme weather events, by re-confirming climate modelling and undertaking a high-level vulnerability assessment.

The project will run for 18 months and is expected to commence this financial year.

This project links closely to our Climate Emergency Response Plan, particularly Pillar 5 – Mobilisation, Education and Collaboration, and Pillar 6, Adaptation and Resilience.

## NOTE THE DATE! E-waste collection is set for May 11

Council coordinates an annual e-waste drop-off day for residents to dispose of their household electronic waste.

This year it will take place at the Ocean View Carpark, 11 May, from 9 am – 1 pm

E-waste is old, unwanted, or broken electronic or electrical equipment. All items collected at our drop-off days are dismantled and the components reused in new products. Please remove any batteries from items prior to drop-off and bring items 'as is', meaning without packaging.

### What can be dropped off?

- Televisions
- Computer equipment
- Home office equipment
- Mobile phones and telecommunications equipment
- Audio visual electronics
- Household appliances



For a detailed list of what can be dropped-off, head to Council's website

### What can't be dropped-off?

- Household batteries
- Light globes
- Whitegoods, including fridges, freezers, ovens/stoves, dryers and washing machines
- Air conditioners
- Smoke detectors.

For further details on what can be dropped off please visit our website – [boq.news/eWaste](http://boq.news/eWaste)



Last year's grant recipients included local primary schools and Point Lonsdale Boardriders Club

## COMMUNITY GRANTS AND EVENT SPONSORSHIP

**Do you have an idea for the community that could do with some financial support? How about a community event that would benefit from Council sponsorship?**

Applications are now open for both Community Grants and Event Sponsorship. The process has changed a little this year, and Council now takes applications annually.

Council provides grants to community organisations that support community, art and cultural projects and activities that enhance the wellbeing and quality of life of residents

living in the Borough of Queenscliffe.

The programs aim to assist local community groups and organisations to increase involvement and provide opportunities for Council and the community to work together, as well as help provide support for events, projects or activities that will promote a healthy, involved, and creative community.

Applications for grants in 2024 are now open and will close on 31 May 2024. We ask all applicants to speak with a member of the Economic and Community Development team on 5258 1377 prior to applying.





Fencing will be continued along the dog beach, improving safety measures for dog beach users.

## Coastal Public Access and Risk Funding confirmed

We're pleased to announce that we've been awarded a grant from the Department of Energy, Environment and Climate Action (DEECA) to continue the fencing at dog beach along the sand dunes, as well as erect new signage in the area.

This grant will help improve the safety of visitors and protect our native coastal vegetation and wildlife.

The funding allows us to erect a further 130m of fencing along the dunes to help prevent people from wandering into unstable areas. Extension of the sand fence is a recommendation from DEECA commissioned report. The funding also allows us to erect

new signage advising dog beach users that the sand dunes are unstable, informing visitors to the area of any potential risks.

Council was also awarded a separate grant to audit beach signage. This will involve reviewing signage at all the beach access points, allowing officers to consider how to better inform visitors concerning any hazards that may exist. In addition, Council officers will identify which signs are missing or damaged and arrange for the installation of new signage where required.

Our dog beach is beloved by many two legged and four legged residents and tourists, and the safety of all is paramount to us. This grant will not only help direct beach visitors to safer areas but will also allow delicate native vegetation to flourish and help protect the wildlife that calls the dunes their home.

## Capital works update

### Hesse Street footpath

The footpath connecting Hesse Street to the boat ramp car park is now complete. The new footpath provides improved and safer pedestrian access to the boat ramp precinct.

### New stairs

The stairs leading into the sea (closest to the skate park) required repairs after the lower half of the staircase was washed away by the tide last year. Consent to undertake the works was granted by DEECA last year, however, due to the dynamic nature of the tides in the area, work has not been possible until recently.

A new handrail has also been installed, improving user safety.



A new footpath has been installed joining Hesse Street to the boat ramp precinct.



Mayor Tolhurst and Alison Marchant, Member for Bellarine with representatives from QCAN and Mondo.

## NEIGHBOURHOOD BATTERIES CONFIRMED FOR THE BOROUGH

The Victorian Labor government has confirmed that the Queenscliff community is a successful recipient of the first round of the 100 Neighbourhood Batteries Program.

The \$42 million program will deliver funding to install four neighbourhood batteries for the communities of Point Lonsdale and Queenscliff.

Neighbourhood batteries improve energy reliability and maximise the benefits of locally generated solar power.

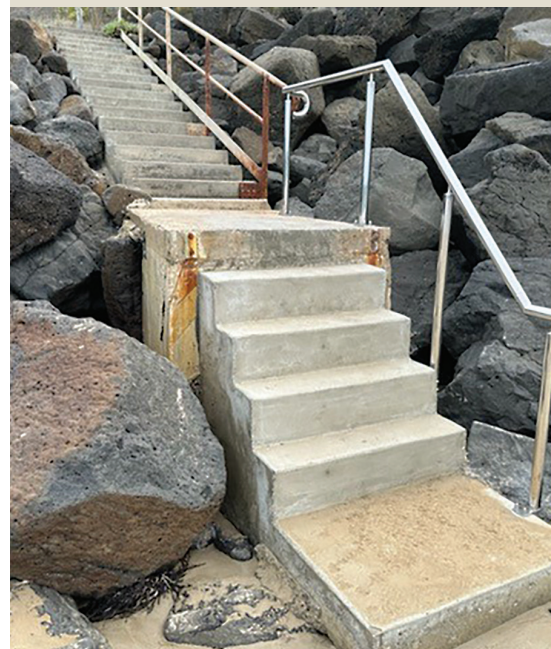
Mayor Isabelle Tolhurst stated 'This is a tremendous win for our community and an acknowledgment of considerable work and advocacy from community over many years. The funding secured by Mondo enables the Borough to strengthen its capacity to generate

energy locally and benefit community members and organisations in doing so.'

A Community Information Session attended by over 90 people was held at Town Hall in April. Presentations were made by the Victorian Government's Department of Energy, Environment and Climate Action (DEECA) who are funding the project, and Mondo who will install and operate the batteries. A representative from Totally Renewable Yackandandah, who already has neighbourhood batteries, also spoke to the audience.

Over the coming months, Mondo will work closely with QCAN to confirm sites for the batteries, before working with Council to secure any approvals that may be required.

Keep an eye on our website for more information. [boq.news/Batteries](http://boq.news/Batteries)



The stairs have been replaced and a new handrail has been installed.





## LISTENING POST

### Do you have a question or suggestion for any of our Councillors?

Why not note these dates in your calendar and come along to our Listening Posts, where you can have a chat and share your thoughts with our Councillors.

- Sunday 26 May, 11am – 12pm at the Queenscliff Market
- Friday 28 June, 11am – 12pm at the Q Hub/Wirring Wirring

## Councillor contacts

Cr Isabelle Tolhurst (Mayor)  
Ph: 0482 992 751  
E: [isabelle.tolhurst@queenscliffe.vic.gov.au](mailto:isabelle.tolhurst@queenscliffe.vic.gov.au)

Cr Ross Ebbels (Deputy Mayor)  
Ph: 0427 448 160  
E: [ross.ebbels@queenscliffe.vic.gov.au](mailto:ross.ebbels@queenscliffe.vic.gov.au)

Cr Donnie Grigau  
Ph: 0437 842 380  
E: [donnie.grigau@queenscliffe.vic.gov.au](mailto:donnie.grigau@queenscliffe.vic.gov.au)

Cr Michael Grout  
Ph: 0437 118 037  
E: [michael.grout@queenscliffe.vic.gov.au](mailto:michael.grout@queenscliffe.vic.gov.au)

Cr Rob Minty  
Ph: 0448 721 596  
E: [rob.minty@queenscliffe.vic.gov.au](mailto:rob.minty@queenscliffe.vic.gov.au)



## Local Government Elections 2024

**A reminder that there are some changes to the way people vote at Council elections that will come into effect during the 2024 Council elections.**

All Borough residents, including resident ratepayers, must vote in the October 2024 Borough of Queenscliffe Council election.

If you are on the state roll you are automatically enrolled to vote in the 2024 council election for your enrolled address.

However, all adult non-resident ratepayers will need to apply to vote in the 2024 Queenscliffe Council election. Only the first two applications received per property will be enrolled. If you become enrolled to vote, then voting is compulsory for all Queenscliffe Council elections while you remain enrolled.

Non-resident ratepayers who previously applied to enrol for the 2020 Queenscliffe Council election will automatically remain on the roll, and it will be compulsory to vote.

Please remember, you can only vote once in each municipality, no matter how many properties you own or occupy.

If you are unsure of your current voting status, please contact Council.

For further details go to [vec.vic.gov.au](http://vec.vic.gov.au)



## Works at Ganes Reserve

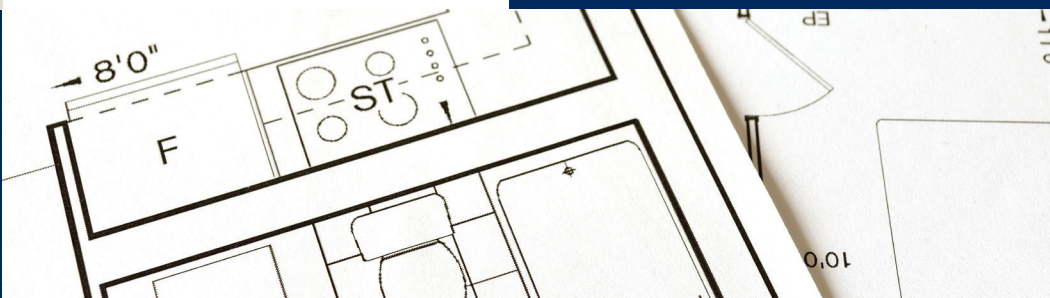
**To help preserve our waterways and natural environs, we've undertaken works at Ganes Reserve.**

These works saw the removal of invasive Bulrush (also known as Typha or Cumbungi) which can choke waterways and create a monoculture preventing other indigenous plants from growing. It also creates buildup of thick silt and sediment, reducing wetland capacity, which contributes to potential risks of flooding.

Once removed, the Typha was placed in piles on-site to drain (and allow any captured wildlife to return to the wetland) before being processed into compost for future use.

An independent, qualified ecologist supervised works to ensure that any negative impacts to other plants, wildlife and the surrounding environment were minimised.

A biodiversity assessment of the site has been undertaken, and an environmental management plan has been developed by the independent ecologist, who ensured all works were completed in accordance with this plan.



## BUILDING A SMALL SECOND DWELLING

**Recently, there have been changes made to all planning schemes in Victoria to make it easier to build a small second dwelling (granny flat) on most properties.**

The amendment makes provision for a small second dwelling to be erected on land without a planning permit (in most circumstances) to help increase housing supply.

The planning requirements depend on the zoning

and overlay controls on your land. Please refer to VicPlan to confirm your zone and overlays.

A small second home still requires a building permit, to meet siting, amenity, design, and safety requirements – and cannot be subdivided or separately sold off from the main home.

[Planning.vic.gov.au](http://Planning.vic.gov.au) has more information, and if you have any questions, you can contact our planning team on 5258 1377.

